

P95H Regulator

- Large Capacity
- Working Media Including Air, Steam and Liquids
- All Vents are Tapped

The P95H is a direct operating pressure reducing regulator with large capacity. Ideally suited for uses in oil and gas, process gases, steam and liquids. Available in four spring ranges and metal or elastomer diaphragm and orifice seat materials.

Applications

- Steam Injection
- In-line Gas and Liquid Control
- Chemical Boilers, Process Heaters

| P95H | | 0 | | | | | | | | | |
|------|-----|---|--|--|--|--|--|--|--|--|------------------------------------|
| | | | | | | | | | | | Body Size |
| | 04 | | | | | | | | | | 1/2 NPT |
| | 06 | | | | | | | | | | 3/4 NPT |
| | 08 | | | | | | | | | | 1 NPT |
| | | | | | | | | | | | Spring Range |
| | | | | | | | | | | | PSIG BAR |
| | 015 | | | | | | | | | | 5 - 15 0.34 - 1.03 |
| | 030 | | | | | | | | | | 15 - 30 1 - 2.1 |
| | 075 | | | | | | | | | | 25 - 75 1.7 - 5.2 |
| | 150 | | | | | | | | | | 70 - 150 9 - 10.3 |
| | | | | | | | | | | | Options |
| | | | | | | | | | | | Standard |
| | | | | | | | | | | | A 150 RF* |
| | | | | | | | | | | | B 300 RF* |
| | | | | | | | | | | | C 600 RF* |
| | | | | | | | | | | | D Socket Weld* |
| | | | | | | | | | | | * Steel and Stainless Steel Bodies |
| | | | | | | | | | | | 0 |
| | | | | | | | | | | | Options |
| | | | | | | | | | | | 0 Standard |
| | | | | | | | | | | | N NACE |
| | | | | | | | | | | | Options |
| | | | | | | | | | | | A 416 SS (Metal / Metal) |
| | | | | | | | | | | | B 416 SS / Fluorocarbon |
| | | | | | | | | | | | C 416 SS / Neoprene |
| | | | | | | | | | | | G Brass / Neoprene |
| | | | | | | | | | | | F Brass / Fluorocarbon |
| | | | | | | | | | | | M Monel (1/2" Only) |
| | | | | | | | | | | | I 316 SS (Metal to Metal) |
| | | | | | | | | | | | J 316 SS / Fluorocarbon |
| | | | | | | | | | | | K 316 SS / Neoprene |
| | | | | | | | | | | | Options |
| | | | | | | | | | | | 0 302 SS |
| | | | | | | | | | | | 2 Fluorocarbon |
| | | | | | | | | | | | 3 Neoprene |
| | | | | | | | | | | | 4 Monel |
| | | | | | | | | | | | Options |
| | | | | | | | | | | | 0 Iron / Iron |
| | | | | | | | | | | | 1 Steel / Steel |
| | | | | | | | | | | | 3 Iron / Steel |
| | | | | | | | | | | | 4 Steel / Stainless |
| | | | | | | | | | | | 5 Stainless / Stainless |



Specifications

| Maximum Inlet | | |
|--------------------|-------------|-----------------|
| | 250 PSIG | Iron / NPT |
| | 300 PSIG | Steel / NPT |
| | 300 PSIG | Stainless / NPT |
| Pressure Ranges | | |
| | 5-15 PSIG | |
| | 15-30 PSIG | |
| | 25-75 PSIG | |
| | 70-150 PSIG | |
| Body Size | | |
| | 1/2 NPT | |
| | 3/4 NPT | |
| | 1 NPT | |
| Weight Approximate | | |
| 1/2" NPT | 8 lb | 3.6 kg |
| 3/4" NPT | 19 lb | 8.6 kg |
| 1" NPT | 19 lb | 8.6 kg |

Materials of Construction

| Body, Bonnet, Diaphragm Case | |
|------------------------------|--------------------|
| Options | Cast Iron |
| | Steel |
| | Stainless Steel |
| Diaphragm | |
| Options | 302SS Fluorocarbon |
| | Neoprene |
| | Monel |
| Supply Valve Shutoff | |
| Options | Metal to Metal |
| | Metal to Elastomer |

P95H Flow Coefficients

| Body Size, Inches | Wide Open Coefficients (For Relief Sizing) | | | C ₁ | K _m |
|-------------------|---|----------------|----------------|----------------|----------------|
| | C _v | C _G | C _S | | |
| 1/2 | 1.9 | 67 | 3.35 | 35 | .71 |
| 3/4, 1 | 4.4 | 156 | 7.80 | 35 | .67 |

P95H Maximum Pressures

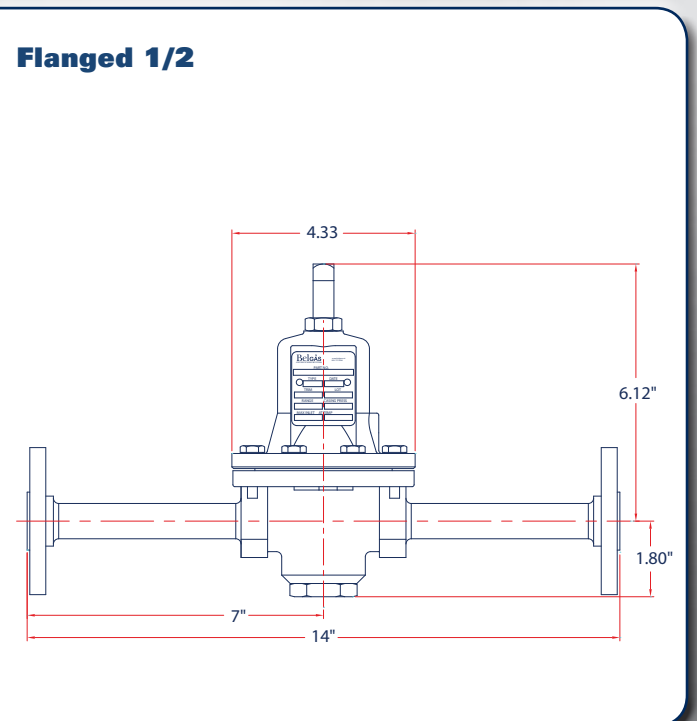
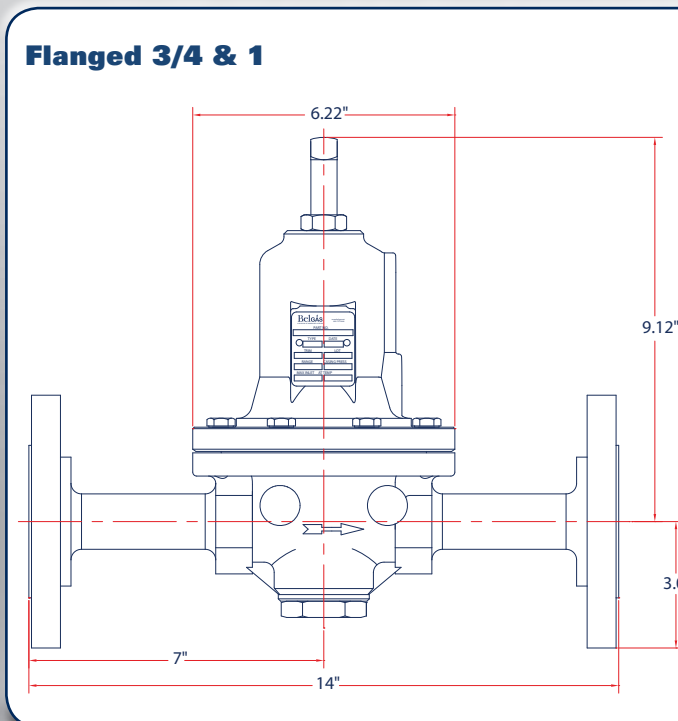
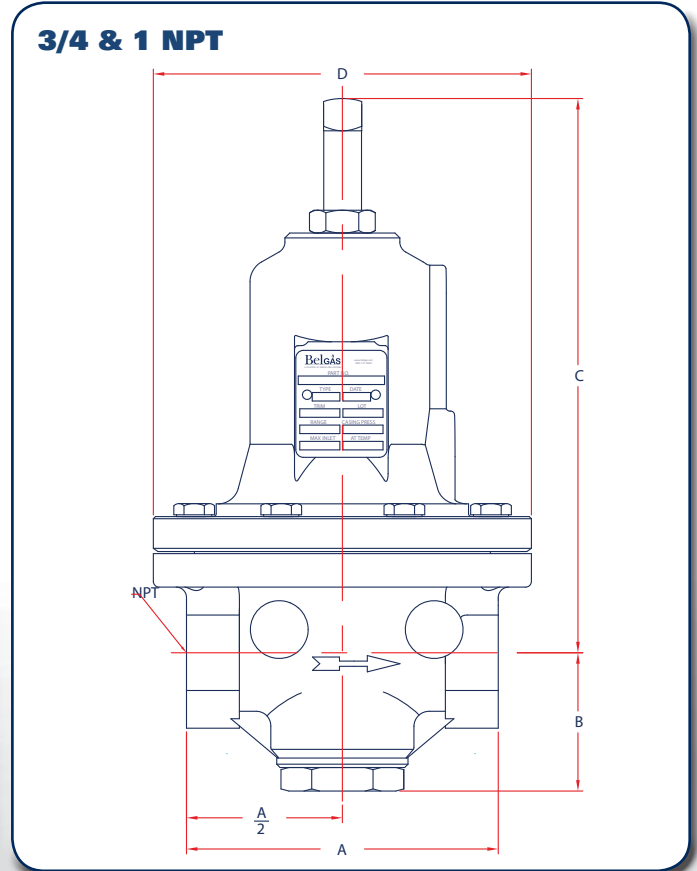
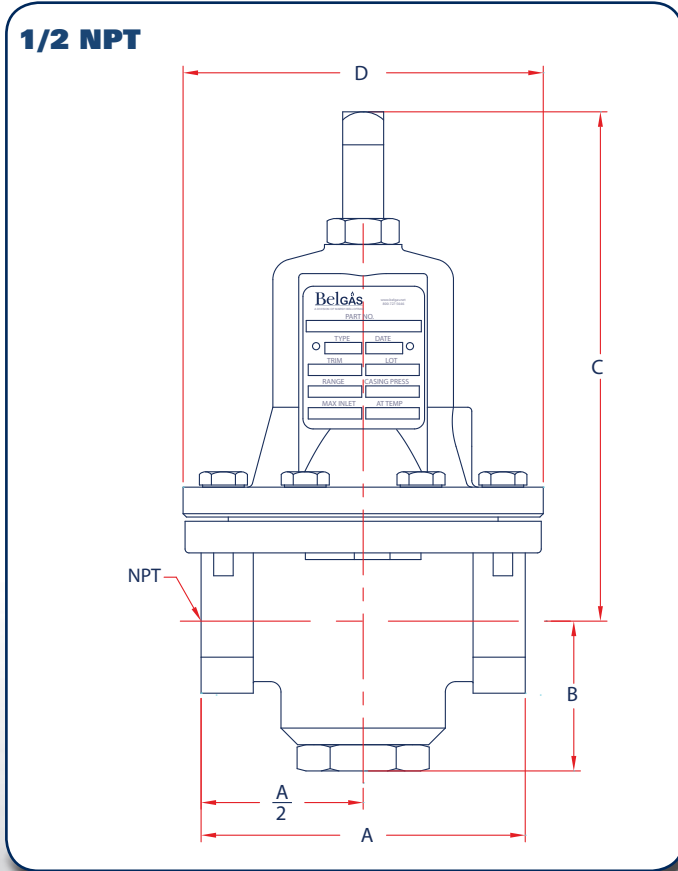
| Nominal Body Size, Inches (DN) | Body and Spring Case Materials | End Connections | Max Inlet Pressure | | Max Outlet Pressure | |
|--------------------------------|--------------------------------|-----------------|--------------------|------|---------------------|------|
| | | | PSIG | BAR | PSIG | BAR |
| 1/2, 3/4, 1 | Cast Iron | NPT | 250 | 17.2 | 150 | 10.3 |
| | Steel / SS | NPT | 300 | 20.7 | 150 | 10.3 |
| | Steel / SS | 150RF | 300 | 19.7 | 150 | 10.3 |
| | Steel / SS | 300RF | 300 | 20.7 | 150 | 10.3 |
| | Steel / SS | 600RF | 300 | 41.2 | 150 | 10.3 |
| | Steel / SS | Socket Weld | 300 | 20.7 | 150 | 10.3 |

Spring Range

| Body Size | PSIG | BAR | Spring Color Code |
|-------------------|----------|-----------|-------------------|
| 1/2", 3/4" and 1" | 5 - 15 | .3 - 1 | White |
| | 15 - 30 | 1 - 2.1 | Yellow |
| | 25 - 75 | 1.7 - 5.2 | Green |
| | 70 - 150 | 9 - 10.3 | Red |

P95H Dimension, Inches

| Nominal Body Size, Inches | A | B | C | D |
|---------------------------|------|------|------|------|
| 1/2 | 3.90 | 1.80 | 6.12 | 4.33 |
| 3/4, 1 | 5.13 | 2.2 | 9.1 | 6.22 |



P95H Repair Kits - 1/2" Ported

| | Kit Includes | Part Number |
|--|--|---|
| 302SS Diaphragm | 302SS Diaphragm (2), Diaphragm Gasket, Brass Orifice, Brass/Neoprene Valve Plug, Valve Spring | 971-P95-007 |
| | 302SS Diaphragm (2), Diaphragm Gasket, Brass Orifice, Brass/FKM Valve Plug, Valve Spring | 971-P95-106 |
| | 302SS Diaphragm (2), Diaphragm Gasket, 416SS Orifice, 416SS/Neoprene Valve Plug, Valve Spring | 971-P95-100 |
| | 302SS Diaphragm (2), Diaphragm Gasket, 416SS Orifice, 416SS/M to M Valve Plug, Valve Spring | 971-P95-101 |
| | 302SS Diaphragm (2), Diaphragm Gasket, 416SS Orifice, 416SS/FKM Valve Plug, Valve Spring | 971-P95-104 |
| | 302SS Diaphragm (2), Diaphragm Gasket, 316SS Orifice, 316SS/M to M Valve Plug, Valve Spring | 971-P95-109 |
| | 302SS Diaphragm (2), Diaphragm Gasket, 316SS Orifice, 316SS/Neoprene Valve Plug, Valve Spring | 971-P95-111 |
| | 302SS Diaphragm (2), Diaphragm Gasket, 316SS Orifice, 316SS/FKM Valve Plug, Valve Spring | 971-P95-110 |
| | 302SS Diaphragm (2), Diaphragm Gasket, 316SS Orifice, Monel Valve Plug, Valve Spring | 971-P95-113 |
| | Neoprene Diaphragm | Neoprene Diaphragm, 416SS Orifice, 416SS/Neoprene Valve Plug, Valve Spring |
| Neoprene Diaphragm, 416SS Orifice, 416SS/FKM Valve Plug, Valve Spring | | 971-P95-127 |
| Neoprene Diaphragm, Brass Orifice, Brass/Neoprene Valve Plug, Valve Spring | | 971-P95-103 |
| Neoprene Diaphragm, Brass Orifice, Brass/FKM Valve Plug, Valve Spring | | 971-P95-129 |
| Neoprene Diaphragm, 416SS Orifice, 416SS/M to M Valve Plug, Valve Spring | | 971-P95-126 |
| Neoprene Diaphragm, 316SS Orifice, 316SS/M to M Valve Plug, Valve Spring | | 971-P95-131 |
| Neoprene Diaphragm, 316SS Orifice, 316SS/Neoprene Valve Plug, Valve Spring | | 971-P95-133 |
| Neoprene Diaphragm, 316SS Orifice, 316SS/FKM Valve Plug, Valve Spring | | 971-P95-132 |
| Neoprene Diaphragm, 316SS Orifice, Monel Valve Plug, Valve Spring | | 971-P95-135 |
| Neoprene Diaphragm, 316SS Orifice, 316SS/M to M Valve Plug, NACE Valve Spring | | 971-P95-153 |
| Neoprene Diaphragm, 316SS Orifice, 316SS/Neoprene Valve Plug, NACE Valve Spring | | 971-P95-155 |
| Neoprene Diaphragm, 316SS Orifice, 316SS/FKM Valve Plug, NACE Valve Spring | | 971-P95-154 |
| Neoprene Diaphragm, 316SS Orifice, Monel Valve Plug, NACE Valve Spring | | 971-P95-157 |
| Monel Diaphragm | | Monel Diaphragm (2), Diaphragm Gasket, 416SS Orifice, 416SS/M to M Valve Plug, Valve Spring |
| | Monel Diaphragm (2), Diaphragm Gasket, 416SS Orifice, 416SS/Neoprene Valve Plug, Valve Spring | 971-P95-138 |
| | Monel Diaphragm (2), Diaphragm Gasket, 416SS Orifice, 416SS/FKM Valve Plug, Valve Spring | 971-P95-137 |
| | Monel Diaphragm (2), Diaphragm Gasket, Brass Orifice, Brass/Neoprene Valve Plug, Valve Spring | 971-P95-141 |
| | Monel Diaphragm (2), Diaphragm Gasket, Brass Orifice, Brass/FKM Valve Plug, Valve Spring | 971-P95-140 |
| | Monel Diaphragm (2), Diaphragm Gasket, 316SS Orifice, 316SS/M to M Valve Plug, Valve Spring | 971-P95-143 |
| | Monel Diaphragm (2), Diaphragm Gasket, 316SS Orifice, 316SS/Neoprene Valve Plug, Valve Spring | 971-P95-145 |
| | Monel Diaphragm (2), Diaphragm Gasket, 316SS Orifice, 316SS/FKM Valve Plug, Valve Spring | 971-P95-144 |
| | Monel Diaphragm (2), Diaphragm Gasket, 316SS Orifice, Monel Valve Plug, Valve Spring | 971-P95-147 |
| | Monel Diaphragm (2), Diaphragm Gasket, 316SS Orifice, 316SS/M to M Valve Plug, NACE Valve Spring | 971-P95-158 |
| | Monel Diaphragm (2), Diaphragm Gasket, 316SS Orifice, 316SS/Neoprene Valve Plug, NACE Valve Spring | 971-P95-160 |
| | Monel Diaphragm (2), Diaphragm Gasket, 316SS Orifice, 316SS/FKM Valve Plug, NACE Valve Spring | 971-P95-159 |
| | Monel Diaphragm (2), Diaphragm Gasket, 316SS Orifice, Monel Valve Plug, NACE Valve Spring, | 971-P95-162 |
| | FKM Diaphragm | FKM Diaphragm (2), Diaphragm Gasket, 416SS Orifice, 416SS/M to M Valve Plug, Valve Spring |
| FKM Diaphragm (2), Diaphragm Gasket, 416SS Orifice, 416SS/Neoprene Valve Plug, Valve Spring | | 971-P95-116 |
| FKM Diaphragm (2), Diaphragm Gasket, 416SS Orifice, 416SS/FKM Valve Plug, Valve Spring | | 971-P95-115 |
| FKM Diaphragm (2), Diaphragm Gasket, Brass Orifice, Brass/Neoprene Valve Plug, Valve Spring | | 971-P95-119 |
| FKM Diaphragm (2), Diaphragm Gasket, Brass Orifice, Brass/FKM Valve Plug, Valve Spring | | 971-P95-118 |
| FKM Diaphragm (2), Diaphragm Gasket, 316SS Orifice, 316SS/M to M Valve Plug, Valve Spring | | 971-P95-121 |
| FKM Diaphragm (2), Diaphragm Gasket, 316SS Orifice, 316SS/Neoprene Valve Plug, Valve Spring | | 971-P95-123 |
| FKM Diaphragm (2), Diaphragm Gasket, 316SS Orifice, 316SS/FKM Valve Plug, Valve Spring | | 971-P95-122 |
| FKM Diaphragm (2), Diaphragm Gasket, 316SS Orifice, Monel Valve Plug, Valve Spring | | 971-P95-125 |
| FKM Diaphragm (2), Diaphragm Gasket, 316SS Orifice, 316SS/M to M Valve Plug, NACE Valve Spring | | 971-P95-148 |
| FKM Diaphragm (2), Diaphragm Gasket, 316SS Orifice, 316SS/Neoprene Valve Plug, NACE Valve Spring | | 971-P95-150 |
| FKM Diaphragm (2), Diaphragm Gasket, 316SS Orifice, 316SS/FKM Valve Plug, NACE Valve Spring | | 971-P95-149 |
| FKM Diaphragm (2), Diaphragm Gasket, 316SS Orifice, Monel Valve Plug, NACE Valve Spring | | 971-P95-152 |

P95H Repair Kits - 3/4" & 1" Ported

| | Kit Includes | Part Number |
|--------------------|--|-------------|
| 302SS Diaphragm | 302SS Diaphragm (2), Diaphragm Gasket, 416SS Orifice, 416SS/Neoprene Valve Plug, Valve Spring | 971-P95-000 |
| | 302SS Diaphragm (2), Diaphragm Gasket, 416SS Orifice, 416SS/FKM Valve Plug, Valve Spring | 971-P95-004 |
| | 302SS Diaphragm (2), Diaphragm Gasket, 416SS Orifice, 416SS/M to M Valve Plug, Valve Spring | 971-P95-001 |
| | 302SS Diaphragm (2), Diaphragm Gasket, 316SS Orifice, 316SS/M to M Valve Plug, Valve Spring | 971-P95-009 |
| | 302SS Diaphragm (2), Diaphragm Gasket, 316SS Orifice, 316SS/Neoprene Valve Plug, Valve Spring | 971-P95-011 |
| | 02SS Diaphragm (2), Diaphragm Gasket, 316SS Orifice, 316SS/FKM Valve Plug, Valve Spring | 971-P95-010 |
| | 302SS Diaphragm (2), Diaphragm Gasket, Brass Orifice, Brass/Neoprene Valve Plug, Valve Spring | 971-P95-107 |
| | 302SS Diaphragm (2), Diaphragm Gasket, Brass Orifice, Brass/FKM Valve Plug, Valve Spring | 971-P95-006 |
| Neoprene Diaphragm | Neoprene Diaphragm, 416SS Orifice, 416SS/Neoprene Valve Plug, Valve Spring | 971-P95-002 |
| | Neoprene Diaphragm, 416SS Orifice, 416SS/FKM Valve Plug, Valve Spring | 971-P95-025 |
| | Neoprene Diaphragm, Brass Orifice, Neoprene Valve Plug, Valve Spring | 971-P95-003 |
| | Neoprene Diaphragm, 416SS Orifice, 416SS/M to M Valve Plug, Valve Spring | 971-P95-024 |
| | Neoprene Diaphragm, 316SS Orifice, 316SS/M to M Valve Plug, Valve Spring | 971-P95-029 |
| | Neoprene Diaphragm, 316SS Orifice, 316SS/Neoprene Valve Plug, Valve Spring | 971-P95-031 |
| | Neoprene Diaphragm, 316SS Orifice, 316SS/M to M Valve Plug, NACE Valve Spring | 971-P95-048 |
| | Neoprene Diaphragm, 316SS Orifice, 316SS/FKM Valve Plug, NACE Valve Spring | 971-P95-049 |
| | Neoprene Diaphragm, 316SS Orifice, 316SS/Neoprene Valve Plug, NACE Valve Spring | 971-P95-050 |
| Monel Diaphragm | Monel Diaphragm (2), Diaphragm Gasket, 416SS Orifice, 416SS/M to M Valve Plug, Valve Spring | 971-P95-033 |
| | Monel Diaphragm (2), Diaphragm Gasket, 416SS Orifice, 416SS/FKM Valve Plug, Valve Spring | 971-P95-034 |
| | Monel Diaphragm (2), Diaphragm Gasket, 416SS Orifice, 416SS/Neoprene Valve Plug, Valve Spring | 971-P95-035 |
| | Monel Diaphragm (2), Diaphragm Gasket, Brass Orifice, Brass/Neoprene Valve Plug, Valve Spring | 971-P95-038 |
| | Monel Diaphragm (2), Diaphragm Gasket, Brass Orifice, Brass/FKM Valve Plug, Valve Spring | 971-P95-037 |
| | Monel Diaphragm (2), Diaphragm Gasket, Brass Orifice, Brass/FKM Valve Plug, Valve Spring | 971-P95-030 |
| | Monel Diaphragm (2), Diaphragm Gasket, 316SS Orifice, 316SS/M to M Valve Plug, Valve Spring | 971-P95-040 |
| | Monel Diaphragm (2), Diaphragm Gasket, 316SS Orifice, 316SS/Neoprene Valve Plug, Valve Spring | 971-P95-042 |
| | Monel Diaphragm (2), Diaphragm Gasket, 316SS Orifice, 316SS/FKM Valve Plug, Valve Spring | 971-P95-041 |
| | Monel Diaphragm (2), Diaphragm Gasket, 316SS Orifice, 316SS/FKM Valve Plug, Valve Spring | 971-P95-030 |
| | Monel Diaphragm (2), Diaphragm Gasket, 316SS Orifice, 316SS/M to M Valve Plug, NACE Valve Spring | 971-P95-052 |
| | Monel Diaphragm (2), Diaphragm Gasket, 316SS Orifice, 316SS/FKM Valve Plug, NACE Valve Spring | 971-P95-053 |
| | Monel Diaphragm (2), Diaphragm Gasket, 316SS Orifice, 316SS/Neoprene Valve Plug, NACE Valve Spring | 971-P95-054 |
| FKM Diaphragm | FKM Diaphragm (2), Diaphragm Gasket, 416SS Orifice, 416SS/M to M Valve Plug, Valve Spring | 971-P95-013 |
| | FKM Diaphragm (2), Diaphragm Gasket, 416SS Orifice, 416SS/FKM Valve Plug, Valve Spring | 971-P95-014 |
| | FKM Diaphragm (2), Diaphragm Gasket, 416SS Orifice, 416SS/Neoprene Valve Plug, Valve Spring | 971-P95-015 |
| | FKM Diaphragm (2), Diaphragm Gasket, Brass Orifice, Brass/Neoprene Valve Plug, Valve Spring | 971-P95-018 |
| | FKM Diaphragm (2), Diaphragm Gasket, Brass Orifice, Brass/FKM Valve Plug, Valve Spring | 971-P95-017 |
| | FKM Diaphragm (2), Diaphragm Gasket, 316SS Orifice, 316SS/M to M Valve Plug, Valve Spring | 971-P95-020 |
| | FKM Diaphragm (2), Diaphragm Gasket, 316SS Orifice, 316SS/Neoprene Valve Plug, Valve Spring | 971-P95-022 |
| | FKM Diaphragm (2), Diaphragm Gasket, 316SS Orifice, 316SS/M to M Valve Plug, NACE Valve Spring | 971-P95-044 |
| | FKM Diaphragm (2), Diaphragm Gasket, 316SS Orifice, 316SS/FKM Valve Plug, NACE Valve Spring | 971-P95-045 |
| | FKM Diaphragm (2), Diaphragm Gasket, 316SS Orifice, 316SS/Neoprene Valve Plug, NACE Valve Spring | 971-P95-046 |

P95H Steam Capacities¹ with Metal Diaphragm

| Outlet Pressure Range | Outlet Pressure Setting | | Inlet Pressure | | 1/2" Body Size | | 3/4" Body Size | | 1" Body Size | |
|-----------------------------------|-------------------------|------|----------------|------|----------------|-----|----------------|-----|--------------|-----|
| | PSIG | BAR | PSIG | BAR | Offset | | Offset | | Offset | |
| | | | | | 10% | 20% | 10% | 20% | 10% | 20% |
| 5 to 15 PSIG (0.35 to 1.0 BAR) | 10 | 0.69 | 20 | 1.4 | 30 | 44 | 68 | 100 | 80 | 120 |
| | | | 30 | 2.1 | 36 | 48 | 84 | 170 | 100 | 200 |
| | | | 50 | 3.5 | 40 | 56 | 110 | 210 | 130 | 250 |
| | | | 75 | 5.2 | 40 | 56 | 190 | 340 | 220 | 400 |
| | | | 100 | 6.9 | 40 | 56 | 260 | 370 | 300 | 440 |
| | | | 150 | 10.3 | 40 | 56 | 310 | 480 | 360 | 560 |
| | | | 200 | 13.8 | 40 | 56 | 340 | 520 | 400 | 600 |
| | 250 | 17.2 | 40 | 56 | 340 | 520 | 400 | 600 | | |
| | 15 | 1.0 | 20 | 1.4 | 32 | 48 | 76 | 110 | 88 | 130 |
| | | | 30 | 2.1 | 44 | 60 | 130 | 180 | 150 | 210 |
| | | | 50 | 3.5 | 52 | 64 | 200 | 290 | 240 | 340 |
| | | | 75 | 5.2 | 56 | 68 | 270 | 370 | 320 | 440 |
| | | | 100 | 6.9 | 56 | 72 | 340 | 520 | 400 | 600 |
| | | | 150 | 10.3 | 56 | 72 | 440 | 600 | 520 | 720 |
| 200 | | | 13.8 | 56 | 72 | 440 | 600 | 520 | 720 | |
| 250 | 17.2 | 56 | 72 | 440 | 600 | 520 | 720 | | | |

| Outlet Pressure Range | Outlet Pressure Setting | | Inlet Pressure | | 1/2" Body Size | | | 3/4" Body Size | | | 1" Body Size | | |
|-------------------------------------|-------------------------|------|----------------|------|----------------|-----|-----|----------------|------|------|--------------|------|------|
| | PSIG | BAR | PSIG | BAR | Offset | | | Offset | | | Offset | | |
| | | | | | 10% | 20% | 40% | 10% | 20% | 40% | 10% | 20% | 40% |
| 15 to 30 PSIG (1.0 to 2.1 BAR) | 15 | 1.0 | 30 | 2.1 | 27 | 42 | 66 | 66 | 93 | 150 | 66 | 99 | 160 |
| | | | 40 | 2.8 | 27 | 45 | 69 | 81 | 110 | 190 | 78 | 130 | 200 |
| | | | 50 | 3.5 | 27 | 45 | 66 | 87 | 130 | 200 | 100 | 160 | 250 |
| | | | 75 | 5.2 | 36 | 54 | 81 | 110 | 170 | 250 | 140 | 210 | 330 |
| | | | 100 | 6.9 | 42 | 63 | 87 | 120 | 180 | 270 | 160 | 240 | 360 |
| | | | 150 | 10.3 | 54 | 72 | 96 | 150 | 210 | 300 | 210 | 300 | 450 |
| | | | 200 | 13.8 | 66 | 84 | 110 | 180 | 240 | 330 | 260 | 360 | 480 |
| | 250 | 17.2 | 63 | 93 | 120 | 200 | 260 | 330 | 260 | 360 | 510 | | |
| | 300 | 20.7 | 81 | 99 | 130 | 220 | 290 | 360 | 300 | 420 | 540 | | |
| | 30 | 2.1 | 40 | 2.8 | 45 | 69 | 110 | 87 | 140 | 190 | 96 | 160 | 200 |
| | | | 50 | 3.5 | 39 | 63 | 100 | 120 | 180 | 230 | 120 | 200 | 250 |
| | | | 75 | 5.2 | 54 | 84 | 130 | 170 | 260 | 360 | 160 | 280 | 360 |
| | | | 100 | 6.9 | 60 | 90 | 130 | 190 | 290 | 420 | 220 | 330 | 480 |
| | | | 150 | 10.3 | 72 | 110 | 160 | 230 | 360 | 480 | 300 | 450 | 660 |
| 200 | | | 13.8 | 93 | 130 | 170 | 280 | 360 | 510 | 360 | 540 | 780 | |
| 250 | | | 17.2 | 110 | 140 | 190 | 270 | 390 | 540 | 420 | 600 | 810 | |
| 300 | 20.7 | 120 | 150 | 200 | 300 | 420 | 570 | 450 | 630 | 840 | | | |
| 25 to 75 PSIG (1.7 to 5.2 BAR) | 50 | 3.4 | 60 | 4.1 | 36 | 60 | 110 | 120 | 200 | 270 | 130 | 220 | 280 |
| | | | 75 | 5.2 | 42 | 69 | 120 | 180 | 260 | 360 | 190 | 290 | 360 |
| | | | 100 | 6.9 | 63 | 87 | 150 | 220 | 330 | 450 | 210 | 390 | 480 |
| | | | 150 | 10.3 | 75 | 110 | 170 | 250 | 390 | 630 | 480 | 540 | 720 |
| | | | 200 | 13.8 | 93 | 140 | 200 | 330 | 510 | 720 | 450 | 720 | 930 |
| | | | 250 | 17.2 | 93 | 140 | 210 | 350 | 540 | 750 | 510 | 780 | 1100 |
| | | | 300 | 20.7 | 110 | 150 | 220 | 360 | 540 | 780 | 570 | 810 | 1100 |
| | 75 | 5.2 | 100 | 6.9 | 69 | 110 | 190 | 240 | 360 | 450 | 260 | 390 | 450 |
| | | | 125 | 8.6 | 78 | 130 | 220 | 330 | 480 | 570 | 390 | 510 | 600 |
| | | | 150 | 10.3 | 96 | 140 | 230 | 360 | 540 | 660 | 390 | 630 | 750 |
| | | | 200 | 13.8 | 110 | 170 | 260 | 420 | 630 | 720 | 510 | 840 | 960 |
| | | | 250 | 17.2 | 120 | 180 | 290 | 480 | 720 | 780 | 660 | 990 | 1100 |
| | | | 300 | 20.7 | 140 | 210 | 300 | 480 | 750 | 840 | 690 | 1100 | 1400 |
| | | | 125 | 8.6 | 100 | 170 | 260 | 260 | 420 | 540 | 330 | 480 | 570 |
| 70 to 150 PSIG (4.8 to 10.3 BAR) | 100 | 6.9 | 150 | 10.3 | 120 | 200 | 330 | 360 | 540 | 660 | 420 | 600 | 690 |
| | | | 175 | 12.0 | 140 | 230 | 360 | 390 | 630 | 780 | 480 | 750 | 840 |
| | | | 200 | 13.8 | 160 | 250 | 390 | 450 | 690 | 900 | 480 | 810 | 960 |
| | | | 250 | 17.2 | 130 | 270 | 420 | 450 | 750 | 1100 | 630 | 1000 | 1200 |
| | | | 300 | 20.7 | 240 | 330 | 450 | 570 | 870 | 1200 | 780 | 1100 | 1400 |
| | | | 150 | 10.3 | 160 | 250 | 330 | 360 | 540 | 630 | 390 | 600 | 690 |
| | | | 175 | 12.0 | 150 | 270 | 390 | 390 | 630 | 750 | 450 | 690 | 810 |
| | 125 | 8.6 | 200 | 13.8 | 170 | 280 | 420 | 480 | 750 | 870 | 510 | 840 | 930 |
| | | | 225 | 15.5 | 200 | 330 | 480 | 510 | 840 | 990 | 570 | 900 | 1100 |
| | | | 250 | 17.2 | 210 | 390 | 510 | 540 | 870 | 1100 | 600 | 1000 | 1200 |
| | | | 300 | 20.7 | 210 | 390 | 570 | 630 | 960 | 1400 | 780 | 1200 | 1400 |
| | | | 175 | 12.0 | 170 | 290 | 360 | 420 | 600 | 870 | 480 | 660 | 780 |
| | | | 200 | 13.8 | 200 | 330 | 420 | 480 | 720 | 870 | 600 | 780 | 900 |
| | | | 225 | 15.5 | 210 | 360 | 480 | 600 | 870 | 990 | 660 | 900 | 1100 |
| 150 | 10.3 | 250 | 17.2 | 270 | 420 | 540 | 600 | 900 | 1100 | 780 | 1100 | 1200 | |
| | | 300 | 20.7 | 260 | 450 | 600 | 690 | 1100 | 1400 | 930 | 1300 | 1400 | |

1. Capacities are based in Pounds of saturated steam per hour.

P95H Pressure Ranges

| Nominal Body Size, Inches | Outlet or Differential Pressure Range | | Spring Wire Diameter | | Spring Part Number | Spring Color |
|---------------------------|---------------------------------------|-------------|----------------------|-------|--------------------|--------------|
| | PSIG | BAR | Inches | mm | | |
| 1/2 | 5 to 15 | .3 to 1 | .192 | 4.88 | 655-754-000 | White |
| | 15 to 30 | 1.0 to 2.1 | .218 | 5.54 | 655-714-000 | Yellow |
| | 25 to 75 | 1.7 to 5.2 | .235 | 5.97 | 655-690-000 | Green |
| | 70 to 150 | 4.8 to 10.3 | .281 | 7.14 | 655-714-001 | Red |
| 3/4, 1 | 5 to 15 | .3 to 1 | .252 | 6.40 | 655-753-000 | White |
| | 15 to 30 | 1.0 to 2.1 | .306 | 7.77 | 655-712-000 | Yellow |
| | 25 to 75 | 1.7 to 5.2 | .343 | 8.71 | 655-712-001 | Green |
| | 70 to 150 | 4.8 to 10.3 | .406 | 10.31 | 655-712-002 | Red |

P95H Air SCFH Capacities with Elastomer Diaphragm

| Outlet Pressure Range | Outlet Pressure Setting | | Inlet Pressure | | 1/2" Body Size Offset | | 3/4" Body Size Offset | | 1" Body Size Offset | | | |
|-----------------------|--------------------------------|-----|----------------|------|-----------------------|------|-----------------------|--------|---------------------|--------|------|------|
| | PSIG | BAR | PSIG | BAR | 10% | 20% | 10% | 20% | 10% | 20% | | |
| | 5 to 15 PSIG (0.35 to 1.0 BAR) | 10 | 0.69 | 20 | 1.4 | 750 | 1100 | 1700 | 2500 | 2000 | 3000 | |
| 30 | | | | 2.1 | 900 | 1200 | 2100 | 4200 | 2500 | 5000 | | |
| 50 | | | | 3.5 | 1000 | 1400 | 2800 | 5300 | 3300 | 6300 | | |
| 75 | | | | 5.2 | 1000 | 1400 | 4700 | 8500 | 5500 | 10,000 | | |
| 100 | | | | 6.9 | 1000 | 1400 | 6400 | 9300 | 7500 | 11,000 | | |
| 150 | | | | 10.3 | 1000 | 1400 | 7700 | 12,000 | 9000 | 14,000 | | |
| 200 | | | | 13.8 | 1000 | 1400 | 8500 | 13,000 | 10,000 | 15,000 | | |
| 250 | | | | 17.2 | 1000 | 1400 | 8500 | 13,000 | 10,000 | 15,000 | | |
| 15 | | | | 1.0 | 20 | 1.4 | 800 | 1200 | 1900 | 2700 | 2200 | 3200 |
| | | | | | 30 | 2.1 | 1100 | 1500 | 3200 | 4500 | 3800 | 5300 |
| | | 50 | 3.5 | | 1300 | 1600 | 5100 | 7200 | 6000 | 8500 | | |
| | | 75 | 5.2 | | 1400 | 1650 | 6800 | 9300 | 8000 | 11,000 | | |
| | | 100 | 6.9 | | 1400 | 1800 | 8500 | 13,000 | 10,000 | 15,000 | | |
| | | 150 | 10.3 | | 1400 | 1800 | 11,000 | 15,000 | 13,000 | 18,000 | | |
| | | 200 | 13.8 | | 1400 | 1800 | 11,000 | 15,000 | 13,000 | 18,000 | | |
| | | 250 | 17.2 | | 1400 | 1800 | 11,000 | 15,000 | 13,000 | 18,000 | | |

| Outlet Pressure Range | Outlet Pressure Setting | | Inlet Pressure | | 1/2" Body Size Offset | | | 3/4" Body Size Offset | | | 1" Body Size Offset | | | | | |
|----------------------------------|--------------------------------|--------------------------------|----------------|------|-----------------------|--------|--------|-----------------------|--------|--------|---------------------|--------|--------|--------|------|--------|
| | PSIG | BAR | PSIG | BAR | 10% | 20% | 40% | 10% | 20% | 40% | 10% | 20% | 40% | | | |
| | 15 to 30 PSIG (1.0 to 2.1 BAR) | 15 | 1.0 | 30 | 2.1 | 900 | 1400 | 2200 | 2200 | 3100 | 4900 | 2200 | 3300 | 5400 | | |
| 40 | | | | 2.8 | 900 | 1500 | 2300 | 2700 | 3800 | 6200 | 2600 | 4200 | 6500 | | | |
| 50 | | | | 3.5 | 900 | 1500 | 2200 | 2900 | 4300 | 6800 | 3400 | 5400 | 8200 | | | |
| 75 | | | | 5.2 | 1200 | 1800 | 2700 | 3800 | 5500 | 8400 | 4800 | 7000 | 11,000 | | | |
| 100 | | | | 6.9 | 1400 | 2100 | 2900 | 4000 | 6000 | 9000 | 5400 | 8000 | 12,000 | | | |
| 150 | | | | 10.3 | 1800 | 2400 | 3200 | 5000 | 7000 | 10,000 | 7000 | 10,000 | 15,000 | | | |
| 200 | | | | 13.8 | 2200 | 2800 | 3600 | 6000 | 8000 | 11,000 | 8700 | 11,700 | 16,000 | | | |
| 250 | | | | 17.2 | 2100 | 3100 | 3900 | 6800 | 8700 | 11,000 | 8500 | 12,000 | 17,000 | | | |
| 300 | | | | 20.7 | 2700 | 3300 | 4300 | 7400 | 9600 | 12,000 | 10,000 | 14,000 | 18,000 | | | |
| 30 | | | | 2.1 | 40 | 2.8 | 1500 | 2300 | 3500 | 2900 | 4500 | 6200 | 3200 | 5200 | 6600 | |
| | | 50 | 3.5 | | 1300 | 2100 | 3400 | 4000 | 6000 | 7800 | 4000 | 6600 | 8300 | | | |
| | | 75 | 5.2 | | 1800 | 2800 | 4200 | 5700 | 8500 | 12,000 | 5400 | 9300 | 12,000 | | | |
| | | 100 | 6.9 | | 2000 | 3000 | 4400 | 6300 | 9800 | 14,000 | 7400 | 11,000 | 16,000 | | | |
| | | 150 | 10.3 | | 2400 | 3800 | 5300 | 7700 | 12,000 | 16,000 | 10,000 | 15,000 | 22,000 | | | |
| | | 200 | 13.8 | | 3100 | 4300 | 5800 | 9200 | 12,000 | 17,000 | 12,000 | 18,000 | 26,000 | | | |
| | | 250 | 17.2 | | 3500 | 4600 | 6300 | 9000 | 13,000 | 18,000 | 14,000 | 20,000 | 27,000 | | | |
| | | 300 | 20.7 | | 4000 | 4900 | 6600 | 10,000 | 14,000 | 19,000 | 15,000 | 21,000 | 28,000 | | | |
| | | 25 to 75 PSIG (1.7 to 5.2 BAR) | 50 | | 3.4 | 60 | 4.1 | 1200 | 2000 | 3800 | 4000 | 6700 | 9000 | 4400 | 7200 | 9200 |
| | | | | | | 75 | 5.2 | 1400 | 2300 | 3900 | 6000 | 8600 | 12,000 | 6300 | 9600 | 12,000 |
| 100 | | | | 6.9 | | 2100 | 2900 | 5000 | 7400 | 11,000 | 15,000 | 7000 | 13,000 | 16,000 | | |
| 150 | 10.3 | | | 2500 | | 3700 | 5700 | 8300 | 13,000 | 21,000 | 16,000 | 18,000 | 24,000 | | | |
| 200 | 13.8 | | | 3100 | | 4600 | 6500 | 11,000 | 17,000 | 24,000 | 15,000 | 24,000 | 31,000 | | | |
| 75 | 5.2 | | 250 | 17.2 | 3100 | 4500 | 6900 | 12,000 | 18,000 | 25,000 | 17,000 | 26,000 | 36,000 | | | |
| | | | 300 | 20.7 | 3500 | 5100 | 7300 | 12,000 | 18,000 | 26,000 | 19,000 | 27,000 | 38,000 | | | |
| | | | 100 | 6.9 | 2300 | 3700 | 6200 | 8000 | 12,000 | 15,000 | 8700 | 13,000 | 15,000 | | | |
| | | | 125 | 8.6 | 2600 | 4300 | 7300 | 11,000 | 16,000 | 19,000 | 13,000 | 17,000 | 20,000 | | | |
| | | | 150 | 10.3 | 3200 | 4700 | 7700 | 12,000 | 18,000 | 22,000 | 13,000 | 21,000 | 25,000 | | | |
| 70 to 150 PSIG (4.8 to 10.3 BAR) | 100 | 6.9 | 200 | 13.8 | 3700 | 5500 | 8500 | 14,000 | 21,000 | 24,000 | 17,000 | 28,000 | 32,000 | | | |
| | | | 250 | 17.2 | 4000 | 6100 | 9500 | 16,000 | 24,000 | 25,000 | 22,000 | 33,000 | 38,000 | | | |
| | | | 300 | 20.7 | 4700 | 7100 | 10,000 | 16,000 | 25,000 | 28,000 | 23,000 | 35,000 | 45,000 | | | |
| | | | 125 | 8.6 | 3400 | 5800 | 8800 | 8500 | 14,000 | 18,000 | 11,000 | 16,000 | 19,000 | | | |
| | | | 150 | 10.3 | 4000 | 6800 | 11,000 | 12,000 | 18,000 | 22,000 | 14,000 | 20,000 | 23,000 | | | |
| | 125 | 8.6 | 175 | 12.0 | 4800 | 7800 | 12,000 | 13,000 | 21,000 | 26,000 | 16,000 | 25,000 | 28,000 | | | |
| | | | 200 | 13.8 | 5200 | 8200 | 13,000 | 15,000 | 23,000 | 30,000 | 16,000 | 27,000 | 32,000 | | | |
| | | | 250 | 17.2 | 4300 | 8900 | 14,000 | 15,000 | 25,000 | 37,000 | 21,000 | 34,000 | 39,000 | | | |
| | | | 300 | 20.7 | 8000 | 11,000 | 15,000 | 19,000 | 29,000 | 41,000 | 26,000 | 38,000 | 46,000 | | | |
| | | | 150 | 10.3 | 5200 | 8200 | 11,000 | 12,000 | 18,000 | 21,000 | 13,000 | 20,000 | 23,000 | | | |
| 150 | 10.3 | 175 | 12.0 | 5000 | 9000 | 13,000 | 13,000 | 21,000 | 25,000 | 15,000 | 23,000 | 27,000 | | | | |
| | | 200 | 13.8 | 5500 | 9300 | 14,000 | 16,000 | 25,000 | 29,000 | 17,000 | 28,000 | 31,000 | | | | |
| | | 225 | 15.5 | 6800 | 11,000 | 16,000 | 17,000 | 28,000 | 33,000 | 19,000 | 30,000 | 35,000 | | | | |
| | | 250 | 17.2 | 6900 | 13,000 | 17,000 | 18,000 | 29,000 | 37,000 | 20,000 | 34,000 | 39,000 | | | | |
| | | 300 | 20.7 | 7000 | 13,000 | 19,000 | 21,000 | 32,000 | 45,000 | 26,000 | 41,000 | 46,000 | | | | |
| 150 | 10.3 | 175 | 12.0 | 5600 | 9500 | 12,000 | 14,000 | 20,000 | 29,000 | 16,000 | 22,000 | 26,000 | | | | |
| | | 200 | 13.8 | 6500 | 11,000 | 14,000 | 16,000 | 24,000 | 29,000 | 20,000 | 26,000 | 30,000 | | | | |
| | | 225 | 15.5 | 7100 | 12,000 | 16,000 | 20,000 | 29,000 | 33,000 | 22,000 | 30,000 | 35,000 | | | | |
| | | 250 | 17.2 | 9000 | 14,000 | 18,000 | 20,000 | 30,000 | 37,000 | 26,000 | 35,000 | 39,000 | | | | |
| | | 300 | 20.7 | 8700 | 15,000 | 20,000 | 23,000 | 37,000 | 45,000 | 31,000 | 44,000 | 46,000 | | | | |

P95H Water Capacities with Elastomer Diaphragm¹

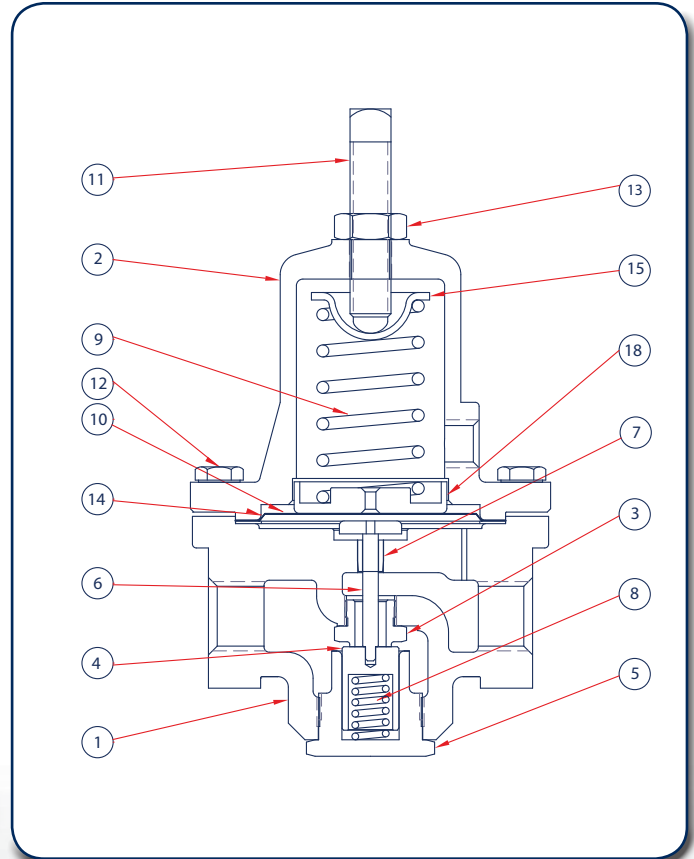
| Outlet Pressure Range | Outlet Pressure Setting | | Inlet Pressure | | 1/2" Body Size | | 3/4" Body Size | | 1" Body Size | |
|-----------------------------------|-------------------------|------|----------------|------|----------------|-----|----------------|-----|--------------|-----|
| | | | | | Offset | | Offset | | Offset | |
| | PSIG | BAR | PSIG | BAR | 10% | 20% | 10% | 20% | 10% | 20% |
| 5 to 15 PSIG (0.35 to 1.0 BAR) | 10 | 0.69 | 20 | 1.4 | 3.7 | 5.0 | 7.0 | 10 | 8.3 | 12 |
| | | | 30 | 2.1 | 4.0 | 5.2 | 10 | 13 | 12 | 16 |
| | | | 50 | 3.5 | 4.2 | 5.3 | 12 | 17 | 14 | 20 |
| | | | 75 | 5.2 | 4.2 | 5.3 | 12 | 20 | 14 | 25 |
| | | | 100 | 6.9 | 4.2 | 5.3 | 12 | 22 | 14 | 27 |
| | | | 150 | 10.3 | 4.2 | 5.3 | 12 | 22 | 14 | 27 |
| | | | 200 | 13.8 | 4.2 | 5.3 | 12 | 22 | 14 | 27 |
| | 15 | 1.0 | 20 | 1.4 | 3.5 | 5.0 | 7.0 | 8.5 | 8.3 | 10 |
| | | | 30 | 2.1 | 4.7 | 5.8 | 11 | 13 | 13 | 15 |
| | | | 50 | 3.5 | 4.8 | 6.2 | 15 | 17 | 18 | 20 |
| | | | 75 | 5.2 | 5.0 | 6.3 | 15 | 22 | 18 | 27 |
| | | | 100 | 6.9 | 5.0 | 6.3 | 15 | 28 | 18 | 33 |
| | | | 150 | 10.3 | 5.0 | 6.3 | 15 | 32 | 18 | 37 |
| | | | 200 | 13.8 | 5.0 | 6.3 | 15 | 35 | 18 | 42 |
| 250 | 17.2 | 5.0 | 6.3 | 15 | 35 | 20 | 42 | | | |

| Outlet Pressure Range | Outlet Pressure Setting | | Inlet Pressure | | 1/2" Body Size | | | 3/4" Body Size | | | 1" Body Size | | |
|-------------------------------------|-------------------------|------|----------------|------|----------------|-----|-----|----------------|-----|-----|--------------|-----|-----|
| | | | | | Offset | | | Offset | | | Offset | | |
| | PSIG | BAR | PSIG | BAR | 10% | 20% | 40% | 10% | 20% | 40% | 10% | 20% | 40% |
| 15 to 30 PSIG (1.0 to 2.1 BAR) | 15 | 1.0 | 30 | 2.1 | 2.0 | 3.2 | 6.8 | 7.0 | 10 | 15 | 8.0 | 11 | 16 |
| | | | 40 | 2.8 | 3.0 | 5.0 | 7.0 | 8.0 | 12 | 18 | 8.0 | 13 | 20 |
| | | | 50 | 3.5 | 4.0 | 5.5 | 7.2 | 9.0 | 14 | 20 | 8.5 | 15 | 23 |
| | | | 75 | 5.2 | 5.0 | 6.5 | 7.4 | 12 | 18 | 26 | 13 | 21 | 29 |
| | | | 100 | 6.9 | 5.0 | 6.5 | 7.6 | 13 | 19 | 28 | 19 | 26 | 34 |
| | | | 150 | 10.3 | 5.0 | 6.5 | 7.8 | 15 | 22 | 31 | 25 | 36 | 42 |
| | | | 200 | 13.8 | 5.1 | 6.5 | 8.0 | 19 | 25 | 35 | 32 | 37 | 44 |
| | | | 250 | 17.2 | 5.1 | 6.6 | 8.5 | 20 | 27 | 37 | 33 | 37 | 46 |
| | 30 | 2.1 | 40 | 2.8 | 2.8 | 4.9 | 9.5 | 9.0 | 13 | 17 | 8.5 | 14 | 17 |
| | | | 50 | 3.5 | 3.5 | 5.7 | 10 | 11 | 16 | 21 | 11 | 18 | 22 |
| | | | 75 | 5.2 | 4.0 | 5.9 | 13 | 15 | 21 | 28 | 16 | 25 | 29 |
| | | | 100 | 6.9 | 5.0 | 6.1 | 14 | 17 | 24 | 33 | 19 | 31 | 34 |
| | | | 150 | 10.3 | 6.0 | 6.5 | 14 | 21 | 30 | 40 | 30 | 39 | 42 |
| | | | 200 | 13.8 | 6.5 | 6.9 | 14 | 24 | 31 | 46 | 35 | 48 | 49 |
| 25 to 75 PSIG (1.7 to 5.2 BAR) | 50 | 3.4 | 250 | 17.2 | 6.5 | 7.0 | 14 | 25 | 35 | 49 | 36 | 53 | 55 |
| | | | 300 | 20.7 | 7.0 | 7.5 | 14 | 26 | 36 | 53 | 37 | 54 | 60 |
| | | | 60 | 4.1 | 4.0 | 6.5 | 12 | 9.0 | 14 | 20 | 12 | 17 | 23 |
| | | | 75 | 5.2 | 5.0 | 8.6 | 12 | 12 | 20 | 25 | 14 | 21 | 27 |
| | | | 100 | 6.9 | 5.5 | 9.0 | 13 | 15 | 24 | 31 | 16 | 26 | 34 |
| | | | 150 | 10.3 | 6.0 | 9.5 | 13 | 23 | 32 | 40 | 20 | 36 | 42 |
| | | | 200 | 13.8 | 6.5 | 10 | 14 | 24 | 34 | 47 | 30 | 42 | 49 |
| | 75 | 5.2 | 250 | 17.2 | 7.0 | 11 | 14 | 26 | 39 | 51 | 33 | 49 | 55 |
| | | | 300 | 20.7 | 7.3 | 11 | 15 | 25 | 40 | 55 | 40 | 55 | 60 |
| | | | 100 | 6.9 | 9.5 | 12 | 15 | 16 | 23 | 28 | 16 | 24 | 30 |
| | | | 125 | 8.6 | 10 | 14 | 18 | 20 | 29 | 33 | 21 | 31 | 36 |
| | | | 150 | 10.3 | 11 | 15 | 21 | 23 | 33 | 39 | 24 | 37 | 42 |
| | | | 200 | 13.8 | 11 | 15 | 23 | 28 | 41 | 47 | 29 | 46 | 49 |
| | | | 250 | 17.2 | 11 | 15 | 23 | 32 | 43 | 52 | 37 | 50 | 55 |
| 70 to 150 PSIG (4.8 to 10.3 BAR) | 100 | 6.9 | 300 | 20.7 | 11 | 15 | 23 | 33 | 49 | 56 | 39 | 56 | 60 |
| | | | 125 | 8.6 | 7.0 | 11 | 16 | 15 | 24 | 30 | 30 | 24 | 32 |
| | | | 150 | 10.3 | 8.0 | 14 | 19 | 17 | 27 | 35 | 35 | 30 | 38 |
| | | | 175 | 12.0 | 9.0 | 15 | 21 | 24 | 28 | 40 | 40 | 33 | 43 |
| | | | 200 | 13.8 | 9.5 | 15 | 23 | 25 | 37 | 45 | 45 | 41 | 48 |
| | | | 250 | 17.2 | 10 | 16 | 24 | 29 | 42 | 52 | 52 | 42 | 54 |
| | 125 | 8.6 | 300 | 20.7 | 11 | 16 | 24 | 33 | 48 | 57 | 57 | 43 | 58 |
| | | | 125 | 8.7 | 7.8 | 12 | 18 | 19 | 25 | 32 | 17 | 27 | 35 |
| | | | 150 | 10.3 | 9.0 | 15 | 20 | 23 | 32 | 37 | 22 | 33 | 40 |
| | | | 175 | 12.0 | 9.5 | 16 | 23 | 27 | 36 | 42 | 24 | 35 | 47 |
| | | | 200 | 13.8 | 10 | 18 | 25 | 32 | 40 | 47 | 29 | 38 | 49 |
| | | | 250 | 17.2 | 11 | 18 | 26 | 34 | 44 | 51 | 32 | 42 | 53 |
| | 150 | 10.3 | 300 | 20.7 | 12 | 18 | 28 | 36 | 47 | 57 | 38 | 44 | 59 |
| | | | 175 | 12.0 | 8.7 | 14 | 19 | 21 | 28 | 34 | 34 | 26 | 37 |
| 200 | | | 13.8 | 10 | 17 | 22 | 24 | 33 | 40 | 40 | 34 | 42 | |
| 225 | | | 15.5 | 12 | 19 | 24 | 29 | 37 | 45 | 45 | 39 | 48 | |
| 250 | | | 17.2 | 13 | 20 | 26 | 30 | 41 | 50 | 50 | 45 | 52 | |
| 300 | | | 20.7 | 13 | 20 | 28 | 35 | 49 | 55 | 55 | 53 | 59 | |

1. Capacities are based in gallons per minute of water.

P95H Parts for 1/2" Body

| Item | Description | Qty. | Part Number |
|------|---------------------------------|------|-------------------|
| 1 | Body | 1 | Cast Iron, 1/2" |
| | Steel, 1/2" | | 664-334-000 |
| | Stainless Steel, 1/2" | | 664-335-000 |
| 2 | Bonnet | 1 | Cast Iron, Tapped |
| | Steel, Tapped | | 604-250-000 |
| | Stainless Steel, Tapped | | 604-252-000 |
| 3 | Orifice | 1 | 416 SS (Metal) |
| | Brass | | 688-031-000 |
| | 416 SS (Composite) | | 688-029-000 |
| | 316 SS (Metal) | | 688-026-000 |
| | 316 SS (Composite) | | 688-030-000 |
| 4 | Valve Plug Seat, 416 SS (Metal) | 1 | 650-151-000 |
| | 416 SS / Neoprene Seat | | 822-030-001 |
| | Brass / Neoprene Seat | | 822-032-001 |
| | 416 SS / Fluorocarbon | | 822-030-000 |
| | Brass / Fluorocarbon | | 822-032-000 |
| | 316 SS / Fluorocarbon | | 822-031-000 |
| | Valve Plug Seat, 316 SS (Metal) | | 650-152-000 |
| | Valve Plug Seat, Monel (Metal) | | 650-162-000 |
| 5 | Valve Plug Guide | 1 | 416 SS (Metal) |
| | Brass | | 639-110-000 |
| | 316 SS (Metal) | | 639-111-000 |
| 6 | Stem Assembly | 1 | 416 SS |
| | 316 SS | | 811-080-000 |
| 7 | Stem Guide Bushing | 1 | 416 SS |
| | 316 SS | | 608-078-000 |
| 8 | Valve Plug Spring | | Stainless Steel |
| | Inconel | | 655-716-000 |
| 9 | Range Springs | 1 | 5-15 PSIG, White |
| | 15-30 PSIG, Yellow | | 655-714-000 |
| | 25-75 PSIG, Green | | 655-690-000 |
| | 70-150 PSIG, Red | | 655-714-001 |
| 10 | Diaphragm | 2 | Neoprene |
| | Fluorocarbon | | 618-088-000 |
| | 302 Stainless Steel | | 618-082-000 |
| | Monel | | 618-081-000 |
| 11 | Adjusting Screw, Steel | 1 | 648-487-000 |
| | Adjusting Screw, SS | | 648-487-001 |
| 12 | Build Screws, Steel | 8 | 648-463-009 |
| | Build Screws, SS | | 648-547-001 |
| 13 | Jam Nut, Steel | 1 | 634-179-000 |
| | Jam Nut, SS | | 634-185-000 |
| 14 | Diaphragm Gasket, Composition | 1 | 624-073-000 |
| 15 | Spring Guide, Steel | 1 | 626-079-000 |
| 16 | NACE Tag (Not Shown) | 1 | 632-503-000 |
| 17 | P95H Nameplate (Not Shown) | 1 | 632-524-000 |
| 18 | Piston, Aluminum | 1 | 637-323-000 |
| 19 | Nameplate Drive Screws | 2 | 648-464-000 |
| 21 | Vent Screen | 1 | 647-023-000 |
| 22 | Diaphragm Protector | 1 | 641-011-000 |



P95H Maximum Body & Bonnet Temp Range

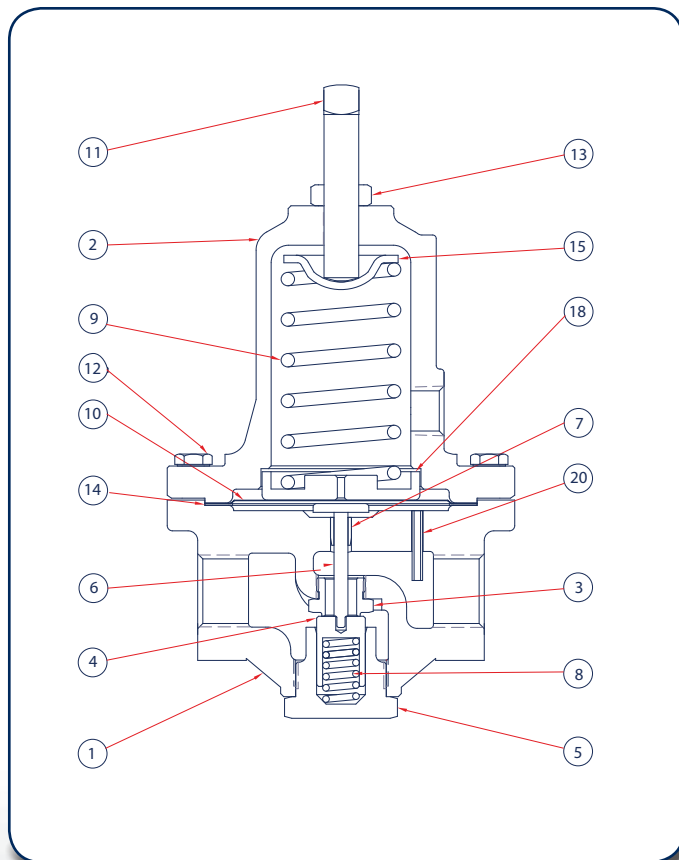
| | | |
|-----------|----------------|----------------|
| Cast Iron | -40° to +406°F | -40° to +208°C |
| Steel | -20° to +450°F | -29° to +232°C |
| Stainless | -40° to +450°F | -40° to +232°C |

P95H Maximum Diaphragm & Seat Temp Range

| | | |
|-----------|----------------|----------------|
| Nitrile | -40° to +180°F | -40° to +82°C |
| Neoprene | -40° to +180°F | -40° to +82°C |
| Stainless | -40° to +650°F | -40° to +343°C |

P95H Parts for 3/4" & 1" Bodies

| Item | Description | Part Number | |
|------|------------------------------------|--|------------------------|
| 1 | Body | Cast Iron, 3/4" | 664-329-000 |
| | | Cast Iron, 1" | 664-329-001 |
| | | Steel, 3/4" | 664-330-000 |
| | | Steel, 1" | 664-330-001 |
| | | Stainless Steel, 3/4" | 664-331-000 |
| | | Stainless Steel, 1" | 664-331-001 |
| 2 | Bonnet | Cast Iron, Tapped | 604-244-000 |
| | | Steel, Tapped | 604-243-000 |
| | | Stainless Steel Tapped | 604-246-000 |
| 3 | Orifice | 416 SS (Metal / Metal) | 688-020-000 |
| | | Brass | 688-022-000 |
| | | 416 SS (Composite) | 688-023-000 |
| | | 316 SS (Metal) | 688-024-000 |
| | | 316 SS (Composite) | 688-021-000 |
| 4 | Valve Plug Assemblies | Valve Plug Seat, 416 SS (Metal) | 650-145-000 |
| | | 416 SS / Neoprene Seat | 822-026-001 |
| | | Brass / Neoprene Seat | 822-028-001 |
| | | 416 SS / Fluorocarbon | 822-026-000 |
| | | Brass / Fluorocarbon | 822-028-000 |
| | | 316 SS / Fluorocarbon | 822-027-000 |
| | | Valve Plug Seat, 316 SS (Metal) Assembly | 316 SS / Neoprene Seat |
| 5 | Valve Plug Guide | 416 SS (Metal) | 639-106-000 |
| | | Brass | 639-107-000 |
| | | 316 SS (Metal) | 639-108-000 |
| 6 | Stem Assembly, 416 SS | Stem Assembly, 416 SS | 811-079-001 |
| | | Stem Assembly, 316 SS | 811-079-000 |
| 7 | Stem Guide Bushing , 416 SS | Stem Guide Bushing , 416 SS | 608-077-000 |
| | | Stem Guide Bushing , 316 SS | 608-076-000 |
| 8 | Valve Plug Spring, Stainless Steel | Valve Plug Spring, Stainless Steel | 655-710-000 |
| | | Valve Plug Spring, Inconel | 655-711-000 |
| 9 | Range Springs | 5-15 PSIG, White | 655-753-000 |
| | | 15-30 PSIG, Yellow | 655-712-000 |
| | | 25-75 PSIG, Green | 655-712-001 |
| | | 70-150 PSIG, Red | 655-712-002 |
| 10 | Diaphragm | Neoprene | 618-075-000 |
| | | Fluorocarbon | 618-076-000 |
| | | 302 Stainless Steel | 618-077-000 |
| | | Monel | 618-078-000 |
| 11 | Adjusting Screw, Steel | Adjusting Screw, Steel | 648-519-000 |
| | | Adjusting Screw, SS | 648-519-001 |
| 12 | Build Screws, Steel | Build Screws, Steel | 648-463-002 |
| | | Build Screws, SS | 648-547-000 |
| 13 | Jam Nut, Steel | Jam Nut, Steel | 634-181-000 |
| | | Jam Nut, SS | 634-181-001 |
| 14 | Diaphragm Gasket, Composition | 624-072-000 | |
| 15 | Spring Guide, Steel | 626-100-000 | |
| 16 | NACE Tag (Not Shown) | 632-503-000 | |
| 17 | P95H Nameplate (Not Shown) | 632-524-000 | |
| 18 | Piston, Aluminum | 637-321-000 | |
| 19 | Nameplate Drive Screws (Not Shown) | 648-464-000 | |
| 20 | Pitot Tube | 660-064-000 | |
| 21 | Vent Screen | 647-023-001 | |
| 22 | Diaphragm Protector | 641-011-000 | |



P95H Maximum Body & Bonnet Temp Range

| Material | Temperature Range (°F) | Temperature Range (°C) |
|-----------|------------------------|------------------------|
| Cast Iron | -40° to +406°F | -40° to +208°C |
| Steel | -20° to +450°F | -29° to +232°C |
| Stainless | -40° to +450°F | -40° to +232°C |

P95H Maximum Diaphragm & Seat Temp Range

| Material | Temperature Range (°F) | Temperature Range (°C) |
|-----------|------------------------|------------------------|
| Nitrile | -40° to +180°F | -40° to +82°C |
| Neoprene | -40° to +180°F | -40° to +82°C |
| Stainless | -40° to +650°F | -40° to +343°C |

P95H Regulator 1-1/2" & 2"



- Large Capacity
- Working Media Including Air, Steam and Liquids
- All Vents are Tapped

The P95H is a direct operating pressure reducing regulator with large capacity. Ideally suited for uses in oil and gas, process gases, steam and liquids. Available in four spring ranges and metal or elastomer diaphragm and orifice seat materials.

Applications

- Steam Injection
- In-line Gas and Liquid Control
- Chemical Boilers, Process Heaters



| P95H | | 0 0 | | | | | | | | | |
|------|-----|-----|---|---|---|---|---|---|---|-------------------------------|------------|
| | ▲ | ▲ | ▲ | ▲ | ▲ | ▲ | ▲ | ▲ | ▲ | Body Size | |
| | 14 | | | | | | | | | 1-1/2 NPT | |
| | 16 | | | | | | | | | 2 NPT | |
| | | | | | | | | | | Spring Range | |
| | | | | | | | | | | PSIG | BAR |
| | 080 | | | | | | | | | 5 - 80 | 0.34 - 5.5 |
| | 120 | | | | | | | | | 60 - 120 | 4.1 - 8.3 |
| | 140 | | | | | | | | | 100 - 140 | 6.9 - 9.6 |
| | 150 | | | | | | | | | 120 - 150 | 8.3 - 10.3 |
| | | | | | | | | | | Options | |
| | 0 | | | | | | | | | Standard | |
| | A | | | | | | | | | 150 RF* | |
| | B | | | | | | | | | 300 RF* | |
| | C | | | | | | | | | 600 RF* | |
| | D | | | | | | | | | Socket Weld* | |
| | 0 0 | | | | | | | | | Place Holder | |
| | | | | | | | | | | Valve Plug / Orifice Material | |
| | A | | | | | | | | | 416 SS (Metal / Metal) | |
| | G | | | | | | | | | Brass / Neoprene | |
| | I | | | | | | | | | 316 SS (Metal / Metal) | |
| | K | | | | | | | | | 316 SS / Neoprene | |
| | | | | | | | | | | Diaphragm Material | |
| | 0 | | | | | | | | | 302 SS | |
| | 3 | | | | | | | | | Neoprene | |
| | | | | | | | | | | Case / Body Material | |
| | 0 | | | | | | | | | Iron / Iron | |
| | 1 | | | | | | | | | Steel / Steel | |
| | 3 | | | | | | | | | Iron / Steel | |

Specifications

| Maximum Inlet | | |
|--------------------|--------------|-------------|
| | 250 PSIG | Iron / NPT |
| | 300 PSIG | Steel / ALL |
| Pressure Ranges | | |
| | 5-80 PSIG | |
| | 60-120 PSIG | |
| | 100-140 PSIG | |
| | 120-150 PSIG | |
| Body Size | | |
| | 1-1/2 NPT | |
| | 2 NPT | |
| Weight Approximate | | |
| 1-1/2" NPT | 73 lb. | 33.1 kg |
| 2" NPT | | |

P95H Flow Coefficients

| Body Size, Inches | Wide Open Coefficients (For Relief Sizing) | | | C ₁ | K _m |
|-------------------|---|----------------|----------------|----------------|----------------|
| | C _v | C _G | C _S | | |
| 1-1/2 | 12.5 | 475 | 23.75 | 38 | 0.83 |
| 2 | | | | | |

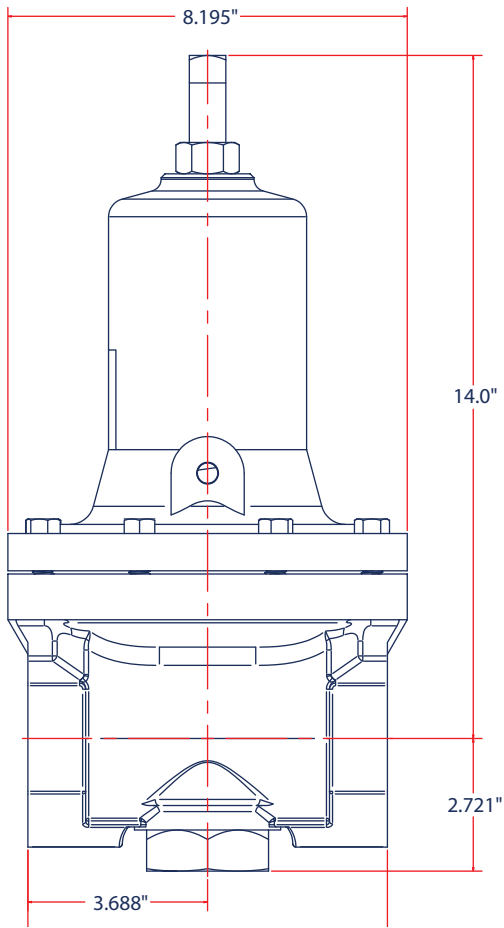
P95H Maximum Pressures

| Nominal Body Size, Inches (DN) | Body and Spring Case Materials | End Connections | Max Inlet Pressure | | Max Outlet Pressure | |
|--------------------------------|--------------------------------|-----------------|--------------------|------|---------------------|------|
| | | | PSIG | BAR | PSIG | BAR |
| 1-1/2 2 | Cast Iron | NPT | 250 | 17.2 | 150 | 10.3 |
| | Steel | NPT | 300 | 20.7 | 150 | 10.3 |
| | Steel | 150RF | 300 | 19.7 | 150 | 10.3 |
| | Steel | 300RF | 300 | 20.7 | 150 | 10.3 |
| | Steel | 600RF | 300 | 41.2 | 150 | 10.3 |
| | Steel | Socket Weld | 300 | 20.7 | 150 | 10.3 |

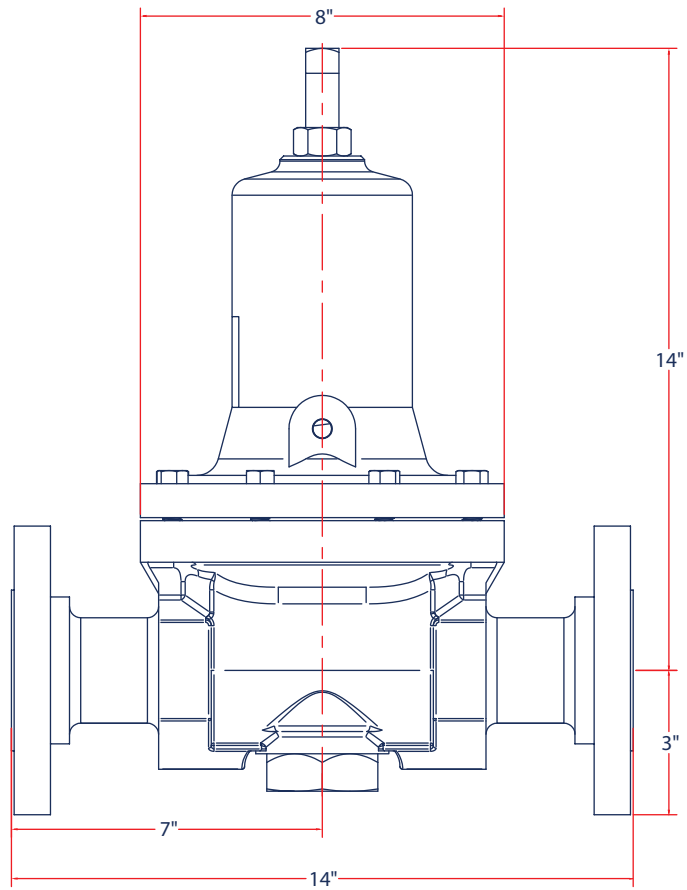
Materials of Construction

| Body, Bonnet, Diaphragm Case | |
|------------------------------|--------------------|
| Options | Cast Iron |
| | Steel |
| Diaphragm | |
| Options | 302SS |
| | Neoprene |
| Supply Valve Shutoff | |
| Options | Metal to Metal |
| | Metal to Elastomer |

P95H 1-1/2 NPT & 2 NPT



P95H Flanged 1-1/2 NPT & 2 NPT



P95H Repair Kits - 1-1/2" & 2" Ported

| | Kit Includes | Part Number |
|--------------------|---|-------------|
| 302SS Diaphragm | 302SS Diaphragm (2), Diaphragm Gasket, 416SS Orifice, 416SS / Neoprene Valve Plug, Valve Spring | 971-P95-500 |
| | 302SS Diaphragm (2), Diaphragm Gasket, 416SS Orifice, 416SS / M to M Valve Plug, Valve Spring | 971-P95-501 |
| | 302SS Diaphragm (2), Diaphragm Gasket, 316SS Orifice, 316SS / M to M Valve Plug, Valve Spring | 971-P95-509 |
| | 302SS Diaphragm (2), Diaphragm Gasket, 316SS Orifice, 316SS / Neoprene Valve Plug, Valve Spring | 971-P95-511 |
| | 302SS Diaphragm (2), Diaphragm Gasket, Brass Orifice, Brass / Neoprene Valve Plug, Valve Spring | 971-P95-507 |
| | 302SS Diaphragm (2), Diaphragm Gasket, 316SS Orifice, 316SS / PTFE Valve Plug, Valve Spring | 971-P95-512 |
| Neoprene Diaphragm | Neoprene Diaphragm, Brass Orifice, Neoprene Valve Plug, Valve Spring | 971-P95-503 |
| | Neoprene Diaphragm, 416SS Orifice, 416SS / M to M Valve Plug, Valve Spring | 971-P95-524 |
| | Neoprene Diaphragm, 316SS Orifice, 316SS / M to M Valve Plug, Valve Spring | 971-P95-529 |
| | Neoprene Diaphragm, 316SS Orifice, 316SS / Neoprene Valve Plug, Valve Spring | 971-P95-531 |
| | Neoprene Diaphragm, 316SS Orifice, 316SS / Neoprene Valve Plug, NACE Valve Spring | 971-P95-550 |
| | Neoprene Diaphragm, 316SS Orifice, 316SS / PTFE Valve Plug, Valve Spring | 971-P95-532 |

P95H Air Capacities with an Elastomer or Stainless Steel Diaphragm

| Outlet Pressure Range | Outlet Pressure Setting | | Inlet Pressure | | 1-1/2" Body Size (DN40) | | | | | | 2" Body Size (DN50) | | | | | |
|--------------------------------------|-------------------------|------|----------------|-------|-------------------------|--------|--------|--------|--------|--------|---------------------|--------|--------|--------|--------|--------|
| | | | | | Offset | | | | | | Offset | | | | | |
| | PSIG | BAR | PSIG | BAR | 10% | | 20% | | 40% | | 10% | | 20% | | 40% | |
| | | | | | SCFH | Nm³/h | SCFH | Nm³/h | SCFH | Nm³/h | SCFH | Nm³/h | SCFH | Nm³/h | SCFH | Nm³/h |
| 5 to 80 PSIG (0.35 to 5.5 BAR) | 5 | 0.35 | 10 | 0.7 | 950 | 25.5 | 1000 | 26.8 | 1500 | 40.2 | 1000 | 26.8 | 1100 | 29.5 | 150 | 40.2 |
| | | | 20 | 1.4 | 2100 | 56.3 | 2500 | 67.0 | 4300 | 115.0 | 1800 | 48.2 | 2000 | 53.6 | 2600 | 69.7 |
| | | | 30 | 2.1 | 2500 | 67.0 | 3000 | 80.4 | 5000 | 134.0 | 3400 | 91.1 | 4600 | 123.0 | 7300 | 196.0 |
| | | | 50 | 3.5 | 3500 | 93.8 | 4000 | 107.0 | 6000 | 161.0 | 4000 | 107.0 | 5500 | 147.0 | 9000 | 241.0 |
| | | | 75 | 5.2 | 5000 | 134.0 | 6000 | 161.0 | 8000 | 214.0 | 5500 | 147.0 | 7000 | 188.0 | 11000 | 295.0 |
| | | | 100 | 6.9 | 6500 | 174.0 | 8000 | 214.0 | 9500 | 255.0 | 9000 | 241.0 | 12000 | 322.0 | 14000 | 375.0 |
| | | | 150 | 10.3 | 8500 | 228.0 | 11000 | 295.0 | 12000 | 322.0 | 15000 | 402.0 | 18000 | 482.0 | 21000 | 563.0 |
| | | | 200 | 13.8 | 12000 | 322.0 | 14000 | 375.0 | 17000 | 456.0 | 16000 | 429.0 | 19000 | 509.0 | 21000 | 563.0 |
| | | | 250 | 17.2 | 15000 | 402.0 | 17000 | 456.0 | 19000 | 509.0 | 18000 | 482.0 | 20000 | 536.0 | 22000 | 590.0 |
| | | | 300 | 20.7 | 18000 | 482.0 | 20000 | 536.0 | 21000 | 563.0 | 19000 | 509.0 | 21000 | 563.0 | 23000 | 616.0 |
| | 30 | 2.1 | 40 | 2.8 | 3400 | 91.1 | 6100 | 163.0 | 10000 | 268.0 | 4500 | 121.0 | 6200 | 166.0 | 11000 | 295.0 |
| | | | 50 | 3.5 | 4500 | 121.0 | 9000 | 241.0 | 14000 | 375.0 | 8000 | 214.0 | 10000 | 268.0 | 15000 | 402.0 |
| | | | 75 | 5.2 | 6000 | 161.0 | 12000 | 322.0 | 18000 | 482.0 | 15000 | 402.0 | 20000 | 536.0 | 25000 | 670.0 |
| | | | 100 | 6.9 | 8000 | 214.0 | 15000 | 402.0 | 23000 | 616.0 | 24000 | 643.0 | 30000 | 804.0 | 35000 | 938.0 |
| | | | 150 | 10.3 | 12000 | 322.0 | 21000 | 563.0 | 35000 | 938.0 | 44000 | 1179.0 | 50000 | 134.0 | 54000 | 1447.0 |
| | | | 200 | 13.8 | 20000 | 536.0 | 31000 | 831.0 | 38000 | 1018.0 | 48000 | 1286.0 | 55000 | 1474.0 | 58000 | 1554.0 |
| | | | 250 | 17.2 | 25000 | 670.0 | 35000 | 938.0 | 41000 | 1099.0 | 51000 | 1367.0 | 58000 | 1554.0 | 60000 | 1608.0 |
| | 300 | 20.7 | 29000 | 777.0 | 38000 | 1018.0 | 44000 | 1179.0 | 53000 | 1420.0 | 59000 | 1581.0 | 61000 | 1635.0 | | |
| | 50 | 3.4 | 60 | 4.1 | 6300 | 169.0 | 10000 | 268.0 | 20000 | 536.0 | 6500 | 174.0 | 11000 | 295.0 | 21000 | 563.0 |
| | | | 75 | 5.2 | 9000 | 241.0 | 14000 | 375.0 | 32000 | 858.0 | 12000 | 322.0 | 20000 | 536.0 | 35000 | 938.0 |
| | | | 100 | 6.9 | 10000 | 268.0 | 19000 | 509.0 | 45000 | 1206.0 | 20000 | 536.0 | 40000 | 1072.0 | 55000 | 1474.0 |
| | | | 150 | 10.3 | 13000 | 348.0 | 28000 | 750.0 | 61000 | 1635.0 | 30000 | 804.0 | 68000 | 1822.0 | 75000 | 2010.0 |
| | | | 200 | 13.8 | 21000 | 563.0 | 36000 | 965.0 | 64000 | 1715.0 | 43000 | 1152.0 | 75000 | 2010.0 | 83000 | 2224.0 |
| | | | 250 | 17.2 | 31000 | 831.0 | 45000 | 1206.0 | 66000 | 1769.0 | 55000 | 1474.0 | 80000 | 2144.0 | 86000 | 2305.0 |
| | | | 300 | 20.7 | 39000 | 1045.0 | 51000 | 1367.0 | 67000 | 1796.0 | 65000 | 1742.0 | 84000 | 2251.0 | 89000 | 2385.0 |
| | 75 | 5.2 | 100 | 6.9 | 14000 | 375.0 | 22000 | 590.0 | 42000 | 1126.0 | 15000 | 402.0 | 28000 | 750.0 | 50000 | 1340.0 |
| | | | 125 | 8.6 | 17000 | 456.0 | 30000 | 804.0 | 55000 | 1474.0 | 20000 | 536.0 | 45000 | 1206.0 | 65000 | 1742.0 |
| | | | 150 | 10.3 | 20000 | 536.0 | 39000 | 1045.0 | 71000 | 1903.0 | 26000 | 697.0 | 69000 | 1849.0 | 76000 | 2037.0 |
| | | | 200 | 13.8 | 23000 | 616.0 | 49000 | 1313.0 | 81000 | 2171.0 | 50000 | 1340.0 | 90000 | 2412.0 | 96000 | 2573.0 |
| | | | 250 | 17.2 | 33000 | 884.0 | 57000 | 1528.0 | 85000 | 2278.0 | 70000 | 1876.0 | 110000 | 2948.0 | 110000 | 2948.0 |
| 300 | | | 20.7 | 43000 | 1152.0 | 65000 | 1742.0 | 88000 | 2358.0 | 90000 | 2412.0 | 120000 | 3216.0 | 120000 | 3216.0 | |
| 60 to 120 PSIG (4.1 to 8.3 BAR) | 100 | 6.9 | 125 | 8.6 | 11000 | 295.0 | 29000 | 777.0 | 50000 | 1340.0 | 12000 | 322.0 | 30000 | 804.0 | 54000 | 1447.0 |
| | | | 150 | 10.3 | 22000 | 590.0 | 37000 | 992.0 | 64000 | 1715.0 | 25000 | 670.0 | 45000 | 1206.0 | 71000 | 1903.0 |
| | | | 175 | 13.8 | 25000 | 670.0 | 47000 | 1260.0 | 75000 | 2010.0 | 33000 | 884.0 | 52000 | 1394.0 | 90000 | 2412.0 |
| | | | 225 | 15.5 | 28000 | 750.0 | 62000 | 1662.0 | 95000 | 2546.0 | 38000 | 1018.0 | 62000 | 1662.0 | 95000 | 2546.0 |
| | | | 250 | 17.2 | 33000 | 884.0 | 70000 | 1876.0 | 110000 | 2948.0 | 45000 | 1206.0 | 70000 | 1876.0 | 130000 | 3484.0 |
| | | | 300 | 20.7 | 40000 | 1072.0 | 88000 | 2358.0 | 120000 | 3216.0 | 55000 | 1474.0 | 80000 | 2144.0 | 150000 | 4020.0 |
| 100 to 140 PSIG (6.9 to 9.7 BAR) | 125 | 8.6 | 150 | 10.3 | 21000 | 563.0 | 40000 | 1072.0 | 64000 | 1715.0 | 22000 | 590.0 | 40000 | 1072.0 | 65000 | 1742.0 |
| | | | 175 | 13.8 | 25000 | 670.0 | 47000 | 1260.0 | 74000 | 1983.0 | 32000 | 858.0 | 50000 | 1340.0 | 75000 | 2010.0 |
| | | | 200 | 13.8 | 28000 | 750.0 | 54000 | 1447.0 | 90000 | 2412.0 | 39000 | 1045.0 | 70000 | 1876.0 | 90000 | 2412.0 |
| | | | 225 | 15.5 | 30000 | 804.0 | 60000 | 1608.0 | 100000 | 2680.0 | 46000 | 1233.0 | 100000 | 2680.0 | 110000 | 2948.0 |
| | | | 250 | 17.2 | 35000 | 938.0 | 70000 | 1876.0 | 110000 | 2948.0 | 56000 | 1501.0 | 120000 | 3216.0 | 130000 | 3484.0 |
| | | | 300 | 20.7 | 42000 | 1126.0 | 85000 | 2276.0 | 130000 | 3484.0 | 86000 | 2305.0 | 150000 | 4020.0 | 150000 | 4020.0 |
| 120 to 150 PSIG (8.3 to 10.3 BAR) | 150 | 10.3 | 175 | 13.8 | 19000 | 509.0 | 32000 | 858.0 | 54000 | 1447.0 | 20000 | 536.0 | 33000 | 884.0 | 55000 | 1474.0 |
| | | | 200 | 13.8 | 23000 | 616.0 | 44000 | 1179.0 | 79000 | 2117.0 | 24000 | 643.0 | 45000 | 1206.0 | 80000 | 2144.0 |
| | | | 225 | 15.5 | 29000 | 777.0 | 61000 | 1635.0 | 100000 | 2680.0 | 29000 | 777.0 | 61000 | 1635.0 | 100000 | 2680.0 |
| | | | 250 | 17.2 | 35000 | 938.0 | 70000 | 1876.0 | 120000 | 3216.0 | 49000 | 1313.0 | 96000 | 2573.0 | 120000 | 3216.0 |
| | | | 300 | 20.7 | 45000 | 1206.0 | 90000 | 2412.0 | 150000 | 4020.0 | 86000 | 2305.0 | 140000 | 3752.0 | 150000 | 4020.0 |

P95H Steam Capacities (saturated) with Stainless Steel Diaphragm

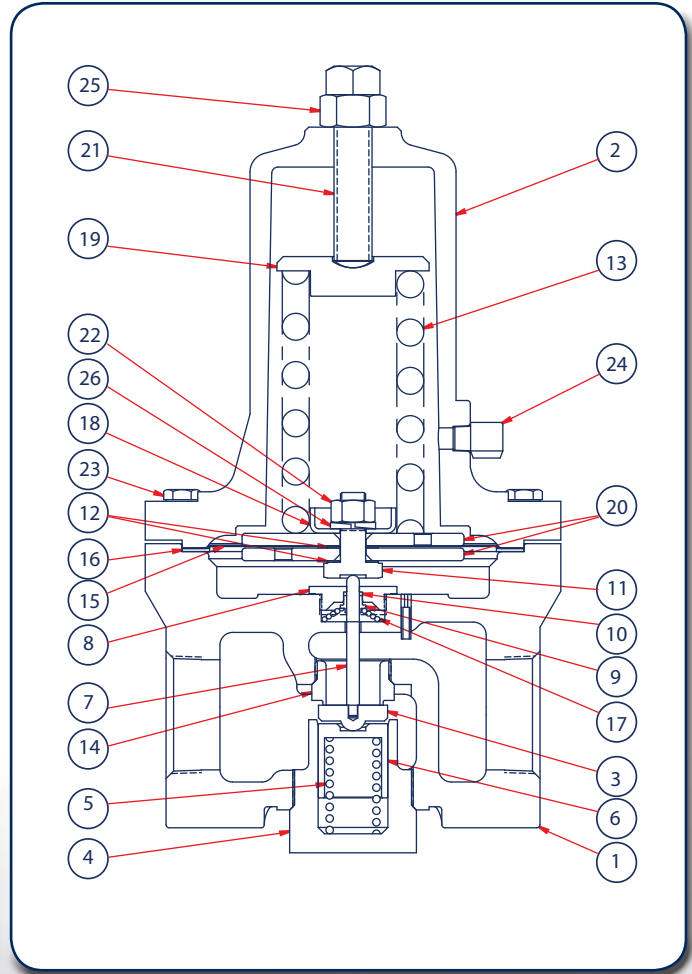
| Outlet Pressure Range | Outlet Pressure Setting | | Inlet Pressure | | 1-1/2" Body Size (DN40) | | | | | | 2" Body Size (DN50) | | | | | |
|--------------------------------------|-------------------------|------|----------------|-------|-------------------------|--------|--------|--------|--------|--------|---------------------|--------|--------|--------|--------|--------|
| | PSIG | BAR | PSIG | BAR | Offset | | | | | | Offset | | | | | |
| | | | | | 10% | | 20% | | 40% | | 10% | | 20% | | 40% | |
| | | | | Pds/h | Kg/h | Pds/h | Kg/h | Pds/h | Kg/h | Pds/h | Kg/h | Pds/h | Kg/h | Pds/h | Kg/h | |
| 5 to 80 PSIG (0.35 to 5.5 BAR) | 5 | 0.35 | 10 | 0.7 | 48 | 22.0 | 50 | 23.0 | 75 | 34.0 | 50 | 23.0 | 55 | 25.0 | 75 | 34.0 |
| | | | 20 | 1.4 | 110 | 50.0 | 130 | 59.0 | 220 | 100.0 | 90 | 41.0 | 100 | 46.0 | 130 | 59.0 |
| | | | 30 | 2.1 | 130 | 59.0 | 150 | 68.0 | 250 | 113.0 | 170 | 77.0 | 230 | 104.0 | 370 | 168.0 |
| | | | 50 | 3.5 | 180 | 82.0 | 200 | 91.0 | 300 | 136.0 | 200 | 91.0 | 280 | 127.0 | 450 | 204.0 |
| | | | 75 | 5.2 | 250 | 113.0 | 300 | 136.0 | 400 | 181.0 | 280 | 127.0 | 350 | 159.0 | 550 | 249.0 |
| | | | 100 | 6.9 | 330 | 150.0 | 400 | 181.0 | 480 | 218.0 | 450 | 204.0 | 600 | 272.0 | 700 | 318.0 |
| | | | 150 | 10.3 | 430 | 195.0 | 550 | 249.0 | 600 | 272.0 | 750 | 340.0 | 900 | 408.0 | 1100 | 499.0 |
| | | | 200 | 13.8 | 600 | 272.0 | 700 | 318.0 | 850 | 386.0 | 800 | 363.0 | 950 | 431.0 | 1100 | 499.0 |
| | | | 250 | 17.2 | 750 | 340.0 | 850 | 386.0 | 950 | 431.0 | 900 | 408.0 | 1000 | 454.0 | 1100 | 499.0 |
| | 300 | 20.7 | 900 | 408.0 | 1000 | 454.0 | 1100 | 499.0 | 950 | 431.0 | 1100 | 499.0 | 1200 | 544.0 | | |
| | 15 | 1.0 | 30 | 2.1 | 130 | 59.0 | 150 | 68.0 | 250 | 113.0 | 140 | 64.0 | 200 | 91.0 | 280 | 127.0 |
| | | | 40 | 2.8 | 180 | 82.0 | 230 | 104.0 | 400 | 181.0 | 190 | 87.0 | 280 | 127.0 | 400 | 181.0 |
| | | | 50 | 3.5 | 230 | 104.0 | 300 | 136.0 | 480 | 218.0 | 240 | 109.0 | 350 | 159.0 | 600 | 272.0 |
| | | | 75 | 5.2 | 300 | 136.0 | 400 | 181.0 | 650 | 295.0 | 350 | 159.0 | 540 | 245.0 | 1100 | 499.0 |
| | | | 100 | 6.9 | 380 | 172.0 | 480 | 218.0 | 800 | 363.0 | 500 | 227.0 | 750 | 340.0 | 1300 | 590.0 |
| | | | 150 | 10.3 | 500 | 227.0 | 610 | 277.0 | 1000 | 454.0 | 750 | 340.0 | 1000 | 454.0 | 1500 | 680.0 |
| | | | 200 | 13.8 | 750 | 340.0 | 950 | 431.0 | 1200 | 544.0 | 1000 | 454.0 | 1200 | 544.0 | 1600 | 726.0 |
| | | | 250 | 17.2 | 900 | 408.0 | 1100 | 499.0 | 1400 | 635.0 | 1200 | 544.0 | 1400 | 635.0 | 1700 | 771.0 |
| | | | 300 | 20.7 | 1100 | 499.0 | 1300 | 590.0 | 1500 | 680.0 | 1300 | 590.0 | 1500 | 680.0 | 1800 | 816.0 |
| | 30 | 2.1 | 40 | 2.8 | 170 | 77.0 | 300 | 136.0 | 500 | 227.0 | 230 | 104.0 | 310 | 141.0 | 550 | 249.0 |
| | | | 50 | 3.5 | 230 | 104.0 | 450 | 204.0 | 700 | 318.0 | 400 | 181.0 | 500 | 227.0 | 750 | 340.0 |
| | | | 75 | 5.2 | 300 | 136.0 | 600 | 272.0 | 900 | 408.0 | 750 | 340.0 | 1000 | 454.0 | 1300 | 590.0 |
| | | | 100 | 6.9 | 400 | 181.0 | 750 | 340.0 | 1200 | 544.0 | 1200 | 544.0 | 1500 | 680.0 | 1800 | 816.0 |
| | | | 150 | 10.3 | 600 | 272.0 | 1100 | 499.0 | 1800 | 816.0 | 2200 | 998.0 | 2500 | 1134.0 | 2700 | 1225.0 |
| | | | 200 | 13.8 | 1000 | 454.0 | 1600 | 726.0 | 1900 | 862.0 | 2400 | 1089.0 | 2800 | 1270.0 | 2900 | 1315.0 |
| | | | 250 | 17.2 | 1300 | 590.0 | 1800 | 816.0 | 2100 | 953.0 | 2600 | 1179.0 | 2900 | 1315.0 | 3000 | 1361.0 |
| | | | 300 | 20.7 | 1500 | 680.0 | 1900 | 862.0 | 2200 | 998.0 | 2700 | 1225.0 | 3000 | 1361.0 | 3100 | 1406.0 |
| 60 | | | 4.1 | 300 | 136.0 | 550 | 249.0 | 1000 | 454.0 | 330 | 150.0 | 600 | 272.0 | 1100 | 499.0 | |
| 50 | 3.4 | 75 | 5.2 | 450 | 204.0 | 700 | 318.0 | 1600 | 726.0 | 600 | 272.0 | 1000 | 454.0 | 1800 | 816.0 | |
| | | 100 | 6.9 | 500 | 227.0 | 950 | 431.0 | 2300 | 1043.0 | 1000 | 454.0 | 2000 | 907.0 | 2800 | 1270.0 | |
| | | 150 | 10.3 | 640 | 290.0 | 1400 | 635.0 | 3100 | 1406.0 | 1500 | 680.0 | 3400 | 1542.0 | 3800 | 1724.0 | |
| | | 200 | 13.8 | 1100 | 499.0 | 1800 | 816.0 | 3200 | 1452.0 | 2200 | 998.0 | 3800 | 1724.0 | 4200 | 1905.0 | |
| | | 250 | 17.2 | 1600 | 726.0 | 230 | 104.0 | 3300 | 1497.0 | 2800 | 1270.0 | 4000 | 1814.0 | 4300 | 1950.0 | |
| | | 300 | 20.7 | 2000 | 907.0 | 2600 | 1179.0 | 3400 | 1542.0 | 3300 | 1497.0 | 4200 | 1905.0 | 4500 | 2041.0 | |
| | | 100 | 6.9 | 700 | 318.0 | 1100 | 499.0 | 2100 | 952.0 | 750 | 340.0 | 1400 | 635.0 | 2500 | 1134.0 | |
| | | 125 | 8.6 | 850 | 386.0 | 1500 | 680.0 | 2800 | 1270.0 | 1000 | 454.0 | 2300 | 1043.0 | 3300 | 1497.0 | |
| | | 150 | 10.3 | 1000 | 454.0 | 2000 | 907.0 | 3600 | 1633.0 | 1300 | 590.0 | 3500 | 1588.0 | 3800 | 1724.0 | |
| 75 | 5.2 | 200 | 13.8 | 1200 | 544.0 | 2500 | 1134.0 | 4100 | 1860.0 | 2500 | 1134.0 | 4500 | 2041.0 | 4800 | 2177.0 | |
| | | 250 | 17.2 | 1700 | 771.0 | 2900 | 1315.0 | 4300 | 1950.0 | 3500 | 1588.0 | 5500 | 2495.0 | 5500 | 2495.0 | |
| | | 300 | 20.7 | 2200 | 998.0 | 3300 | 1497.0 | 4400 | 1996.0 | 4500 | 2041.0 | 6000 | 2722.0 | 6000 | 2722.0 | |
| | | 125 | 8.6 | 550 | 249.0 | 1500 | 680.0 | 2500 | 1134.0 | 600 | 272.0 | 1500 | 680.0 | 2700 | 1225.0 | |
| | | 150 | 10.3 | 1100 | 499.0 | 1900 | 862.0 | 3200 | 1452.0 | 1300 | 590.0 | 2300 | 1043.0 | 3600 | 1633.0 | |
| | | 175 | 13.8 | 1300 | 590.0 | 2400 | 1089.0 | 3800 | 1724.0 | 1700 | 771.0 | 2600 | 1179.0 | 4500 | 2041.0 | |
| | | 225 | 15.5 | 1400 | 635.0 | 3100 | 1406.0 | 4800 | 2177.0 | 1400 | 635.0 | 3100 | 1406.0 | 4800 | 2177.0 | |
| | | 250 | 17.2 | 1700 | 771.0 | 3500 | 1588.0 | 5500 | 2495.0 | 2300 | 1043.0 | 3500 | 1588.0 | 6500 | 2948.0 | |
| | | 300 | 20.7 | 2000 | 907.0 | 4400 | 1996.0 | 6000 | 2722.0 | 2800 | 1270.0 | 4000 | 1814.0 | 7500 | 3402.0 | |
| 60 to 120 PSIG (4.1 to 8.3 BAR) | 100 | 6.9 | 125 | 8.6 | 550 | 249.0 | 1500 | 680.0 | 2500 | 1134.0 | 600 | 272.0 | 1500 | 680.0 | 2700 | 1225.0 |
| | | | 150 | 10.3 | 1100 | 499.0 | 1900 | 862.0 | 3200 | 1452.0 | 1300 | 590.0 | 2300 | 1043.0 | 3600 | 1633.0 |
| | | | 175 | 13.8 | 1300 | 590.0 | 2400 | 1089.0 | 3800 | 1724.0 | 1700 | 771.0 | 2600 | 1179.0 | 4500 | 2041.0 |
| | | | 225 | 15.5 | 1400 | 635.0 | 3100 | 1406.0 | 4800 | 2177.0 | 1400 | 635.0 | 3100 | 1406.0 | 4800 | 2177.0 |
| | | | 250 | 17.2 | 1700 | 771.0 | 3500 | 1588.0 | 5500 | 2495.0 | 2300 | 1043.0 | 3500 | 1588.0 | 6500 | 2948.0 |
| 100 to 140 PSIG (6.9 to 9.7 BAR) | 125 | 8.6 | 150 | 10.3 | 1100 | 499.0 | 2000 | 907.0 | 3200 | 1452.0 | 1100 | 499.0 | 2000 | 907.0 | 3300 | 1497.0 |
| | | | 175 | 13.8 | 1300 | 590.0 | 2400 | 1089.0 | 3700 | 1678.0 | 1600 | 726.0 | 2500 | 1134.0 | 3800 | 1724.0 |
| | | | 200 | 13.8 | 1400 | 635.0 | 2700 | 1225.0 | 4500 | 2041.0 | 2000 | 907.0 | 3500 | 1588.0 | 4500 | 2041.0 |
| | | | 225 | 15.5 | 1500 | 680.0 | 3000 | 1361.0 | 5000 | 2268.0 | 2300 | 1043.0 | 5000 | 2268.0 | 5500 | 2495.0 |
| | | | 250 | 17.2 | 1800 | 816.0 | 3500 | 1588.0 | 5500 | 2495.0 | 2800 | 1270.0 | 6000 | 2722.0 | 6500 | 2948.0 |
| 120 to 150 PSIG (8.3 to 10.3 BAR) | 150 | 10.3 | 175 | 13.8 | 950 | 431.0 | 1600 | 726.0 | 2700 | 1225.0 | 1000 | 454.0 | 1700 | 771.0 | 2800 | 1270.0 |
| | | | 200 | 13.8 | 1200 | 544.0 | 2200 | 998.0 | 4000 | 1814.0 | 1200 | 544.0 | 2300 | 1043.0 | 4000 | 1814.0 |
| | | | 225 | 15.5 | 1500 | 680.0 | 3100 | 1406.0 | 5000 | 2268.0 | 1500 | 680.0 | 3100 | 1406.0 | 5000 | 2268.0 |
| | | | 250 | 17.2 | 1800 | 816.0 | 3500 | 1588.0 | 6000 | 2722.0 | 2500 | 1134.0 | 4800 | 2177.0 | 6000 | 2722.0 |
| | | | 300 | 20.7 | 2300 | 1043.0 | 4500 | 2041.0 | 7500 | 3402.0 | 4300 | 1950.0 | 7000 | 3175.0 | 7500 | 3402.0 |

P95H Water Capacities with an Elastomer or Stainless Steel Diaphragm

| Outlet Pressure Range | Outlet Pressure Setting | | Inlet Pressure | | 1-1/2" Body Size (DN40) | | | | | | 2" Body Size (DN50) | | | | | | | |
|-----------------------------------|-------------------------|------|----------------|------|-------------------------|-------|-------|-------|-------|-------|---------------------|-------|-------|-------|-------|-------|-------|-------|
| | | | | | Offset | | | | | | Offset | | | | | | | |
| | PSIG | BAR | PSIG | BAR | 10% | | 20% | | 40% | | 10% | | 20% | | 40% | | | |
| | | | | | GPM | l/min | GPM | l/min | GPM | l/min | GPM | l/min | GPM | l/min | GPM | l/min | | |
| 5 to 80 PSIG (0.35 to 5.5 BAR) | 5 | 0.35 | 10 | 0.7 | 5 | 18.0 | 6 | 20.0 | 8 | 28.0 | 5 | 18.0 | 6 | 20.0 | 8 | 28.0 | | |
| | | | 20 | 1.4 | 6 | 24.0 | 7 | 27.0 | 9 | 34.0 | 6 | 24.0 | 7 | 27.0 | 10 | 38.0 | | |
| | | | 30 | 2.1 | 8 | 28.0 | 9 | 34.0 | 10 | 38.0 | 8 | 28.0 | 9 | 34.0 | 12 | 45.0 | | |
| | | | 50 | 3.5 | 9 | 34.0 | 10 | 37.0 | 12 | 45.0 | 10 | 37.0 | 12 | 45.0 | 15 | 57.0 | | |
| | | | 75 | 5.2 | 12 | 45.0 | 13 | 49.0 | 15 | 57.0 | 12 | 45.0 | 14 | 53.0 | 16 | 61.0 | | |
| | | | 100 | 6.9 | 14 | 53.0 | 15 | 57.0 | 17 | 64.0 | 14 | 53.0 | 15 | 57.0 | 18 | 68.0 | | |
| | | | 150 | 10.3 | 16 | 61.0 | 18 | 68.0 | 20 | 76.0 | 17 | 64.0 | 20 | 76.0 | 22 | 83.0 | | |
| | | | 200 | 13.8 | 18 | 68.0 | 20 | 76.0 | 23 | 87.0 | 18 | 68.0 | 21 | 79.0 | 23 | 87.0 | | |
| | | | 250 | 17.2 | 19 | 72.0 | 22 | 83.0 | 25 | 95.0 | 25 | 95.0 | 27 | 102.0 | 30 | 114.0 | | |
| | 300 | 20.7 | 20 | 76.0 | 24 | 91.0 | 28 | 106.0 | 33 | 125.0 | 40 | 151.0 | 45 | 170.0 | | | | |
| | 15 | 1.0 | 30 | 2.1 | 8 | 28.0 | 9 | 34.0 | 11 | 42.0 | 7 | 27.0 | 10 | 38.0 | 14 | 53.0 | | |
| | | | 40 | 2.8 | 10 | 38.0 | 11 | 42.0 | 14 | 53.0 | 10 | 38.0 | 13 | 49.0 | 17 | 64.0 | | |
| | | | 50 | 3.5 | 12 | 45.0 | 13 | 49.0 | 18 | 68.0 | 11 | 42.0 | 15 | 57.0 | 20 | 76.0 | | |
| | | | 75 | 5.2 | 14 | 53.0 | 18 | 68.0 | 25 | 95.0 | 15 | 57.0 | 19 | 72.0 | 26 | 98.0 | | |
| | | | 100 | 6.9 | 17 | 64.0 | 21 | 80.0 | 32 | 121.0 | 18 | 68.0 | 22 | 83.0 | 32 | 121.0 | | |
| | | | 150 | 10.3 | 21 | 80.0 | 27 | 102.0 | 43 | 163.0 | 21 | 80.0 | 28 | 106.0 | 40 | 151.0 | | |
| | | | 200 | 13.8 | 23 | 87.0 | 32 | 121.0 | 52 | 197.0 | 24 | 91.0 | 31 | 117.0 | 43 | 163.0 | | |
| | | | 250 | 17.2 | 24 | 91.0 | 34 | 129.0 | 54 | 204.0 | 27 | 102.0 | 40 | 151.0 | 50 | 189.0 | | |
| | | | 300 | 20.7 | 25 | 95.0 | 35 | 132.0 | 55 | 208.0 | 32 | 121.0 | 50 | 189.0 | 65 | 246.0 | | |
| | 30 | 2.1 | 40 | 2.8 | 13 | 49.0 | 18 | 68.0 | 27 | 102.0 | 13 | 49.0 | 18 | 68.0 | 27 | 102.0 | | |
| | | | 50 | 3.5 | 15 | 57.0 | 21 | 80.0 | 30 | 114.0 | 14 | 53.0 | 20 | 76.0 | 30 | 114.0 | | |
| | | | 75 | 5.2 | 18 | 68.0 | 26 | 98.0 | 40 | 151.0 | 18 | 68.0 | 25 | 95.0 | 39 | 148.0 | | |
| | | | 100 | 6.9 | 21 | 80.0 | 30 | 114.0 | 49 | 185.0 | 22 | 83.0 | 30 | 114.0 | 48 | 182.0 | | |
| | | | 150 | 10.3 | 24 | 91.0 | 36 | 136.0 | 64 | 242.0 | 26 | 98.0 | 36 | 136.0 | 63 | 238.0 | | |
| | | | 200 | 13.8 | 27 | 102.0 | 41 | 155.0 | 80 | 303.0 | 30 | 114.0 | 41 | 155.0 | 77 | 291.0 | | |
| | | | 250 | 17.2 | 30 | 114.0 | 47 | 178.0 | 110 | 416.0 | 31 | 117.0 | 45 | 170.0 | 90 | 341.0 | | |
| | | | 300 | 20.7 | 33 | 125.0 | 55 | 208.0 | 130 | 492.0 | 32 | 121.0 | 52 | 197.0 | 110 | 416.0 | | |
| | | | 50 | 3.4 | 60 | 4.1 | 17 | 64.0 | 29 | 110.0 | 51 | 193.0 | 16 | 61.0 | 29 | 110.0 | 51 | 193.0 |
| | 75 | 5.2 | | | 20 | 76.0 | 33 | 125.0 | 58 | 220.0 | 19 | 72.0 | 32 | 121.0 | 56 | 212.0 | | |
| | 100 | 6.9 | | | 25 | 95.0 | 40 | 151.0 | 68 | 257.0 | 24 | 91.0 | 38 | 144.0 | 65 | 246.0 | | |
| | 150 | 10.3 | | | 34 | 129.0 | 50 | 189.0 | 87 | 329.0 | 32 | 121.0 | 49 | 185.0 | 84 | 318.0 | | |
| | 200 | 13.8 | | | 42 | 159.0 | 61 | 231.0 | 110 | 416.0 | 42 | 159.0 | 62 | 235.0 | 110 | 416.0 | | |
| | 250 | 17.2 | | | 50 | 189.0 | 71 | 269.0 | 130 | 492.0 | 50 | 189.0 | 73 | 276.0 | 140 | 530.0 | | |
| | 300 | 20.7 | | | 56 | 212.0 | 82 | 310.0 | 160 | 606.0 | 55 | 208.0 | 83 | 314.0 | 160 | 606.0 | | |
| | 75 | 5.2 | | | 100 | 6.9 | 19 | 72.0 | 30 | 114.0 | 60 | 227.0 | 20 | 76.0 | 30 | 114.0 | 60 | 227.0 |
| | | | | | 125 | 8.6 | 31 | 117.0 | 56 | 212.0 | 85 | 322.0 | 27 | 102.0 | 49 | 185.0 | 85 | 322.0 |
| 150 | | | 10.3 | 38 | 144.0 | 65 | 246.0 | 110 | 416.0 | 34 | 129.0 | 60 | 227.0 | 110 | 416.0 | | | |
| 200 | | | 13.8 | 52 | 197.0 | 74 | 280.0 | 120 | 454.0 | 45 | 170.0 | 71 | 269.0 | 120 | 454.0 | | | |
| 250 | | | 17.2 | 57 | 216.0 | 85 | 322.0 | 140 | 530.0 | 56 | 212.0 | 85 | 322.0 | 140 | 530.0 | | | |
| 300 | | | 20.7 | 65 | 246.0 | 95 | 360.0 | 160 | 606.0 | 68 | 257.0 | 100 | 378.0 | 160 | 606.0 | | | |
| 100 | | | 6.9 | 125 | 8.6 | 23 | 87.0 | 30 | 114.0 | 75 | 284.0 | 24 | 91.0 | 32 | 121.0 | 76 | 288.0 | |
| | | | | 150 | 10.3 | 41 | 155.0 | 44 | 167.0 | 87 | 329.0 | 33 | 125.0 | 45 | 170.0 | 89 | 337.0 | |
| | | | | 175 | 13.8 | 40 | 151.0 | 55 | 208.0 | 100 | 378.0 | 41 | 155.0 | 57 | 216.0 | 110 | 416.0 | |
| | 225 | 15.5 | | 52 | 197.0 | 83 | 314.0 | 130 | 492.0 | 54 | 204.0 | 84 | 318.0 | 130 | 492.0 | | | |
| | 250 | 17.2 | | 62 | 235.0 | 96 | 363.0 | 140 | 530.0 | 65 | 246.0 | 100 | 378.0 | 140 | 530.0 | | | |
| | 300 | 20.7 | | 70 | 265.0 | 100 | 378.0 | 180 | 681.0 | 100 | 378.0 | 130 | 492.0 | 160 | 606.0 | | | |
| | 125 | 8.6 | | 150 | 10.3 | 29 | 106.0 | 51 | 193.0 | 80 | 303.0 | 29 | 110.0 | 52 | 197.0 | 83 | 314.0 | |
| | | | | 175 | 13.8 | 29 | 110.0 | 60 | 227.0 | 90 | 341.0 | 31 | 117.0 | 61 | 231.0 | 95 | 360.0 | |
| | | | | 200 | 13.8 | 30 | 114.0 | 64 | 242.0 | 110 | 416.0 | 33 | 125.0 | 71 | 269.0 | 110 | 416.0 | |
| 225 | | | 15.5 | 36 | 136.0 | 70 | 265.0 | 110 | 416.0 | 36 | 136.0 | 82 | 310.0 | 120 | 454.0 | | | |
| 250 | | | 17.2 | 38 | 144.0 | 76 | 288.0 | 120 | 454.0 | 45 | 170.0 | 95 | 360.0 | 130 | 492.0 | | | |
| 300 | | | 20.7 | 39 | 148.0 | 82 | 310.0 | 140 | 530.0 | 69 | 261.0 | 120 | 454.0 | 150 | 568.0 | | | |
| 150 | | | 10.3 | 175 | 13.8 | 29 | 110.0 | 52 | 197.0 | 90 | 341.0 | 33 | 125.0 | 54 | 204.0 | 92 | 348.0 | |
| | | | | 200 | 13.8 | 32 | 121.0 | 55 | 208.0 | 100 | 378.0 | 34 | 129.0 | 58 | 220.0 | 100 | 378.0 | |
| | | | | 225 | 15.5 | 35 | 132.0 | 63 | 238.0 | 110 | 416.0 | 37 | 140.0 | 64 | 242.0 | 110 | 416.0 | |
| | 250 | 17.2 | | 40 | 151.0 | 70 | 265.0 | 120 | 454.0 | 43 | 163.0 | 73 | 276.0 | 130 | 492.0 | | | |
| | 300 | 20.7 | | 55 | 208.0 | 94 | 356.0 | 140 | 530.0 | 55 | 208.0 | 95 | 360.0 | 150 | 568.0 | | | |

P95H Parts for 1-1/2" & 2" Body

| Item | | Description | Qty. | Part Number |
|------|---------------------------------------|---------------------------|------|-------------|
| 1 | Body/Pi-tot Tube Assy. | Cast Iron, 1-1/2" | 1 | 805-388-000 |
| | | Steel, 1-1/2" | | 805-388-002 |
| | | Cast Iron, 2" | | 805-388-001 |
| | | Steel, 2" | | 805-388-003 |
| 2 | Bonnet | Cast Iron, Tapped | 1 | 604-269-000 |
| | | Steel, Tapped | | 604-270-000 |
| 3 | Seat | 416 SS (Metal) | 1 | 650-192-000 |
| | | Brass / Nitrile | | 822-058-001 |
| | | 316 SS (Metal) | | 650-192-001 |
| | | 316 SS / PTFE Seat | | 822-058-002 |
| | | 316 SS / Neoprene Seat | | 822-058-000 |
| 4 | Valve Plug Guide | Brass | 1 | 639-143-002 |
| | | 416 SS (Metal) | | 639-143-000 |
| | | 316 SS (Metal) | | 639-143-001 |
| 5 | Valve Spring | 316 SS | 1 | 655-769-000 |
| | | Inconel | | 655-769-001 |
| 6 | Valve Base | 416 SS | 1 | 650-194-000 |
| | | 316 SS | | 650-194-001 |
| 7 | Stem | 416 SS | 1 | 651-105-000 |
| | | 316 SS | | 651-105-001 |
| 8 | Stem Bushing | 416 SS | 1 | 608-086-000 |
| | | 316 SS | | 608-086-001 |
| 9 | Packing Follower | 416 SS | 1 | 643-223-000 |
| | | 316 SS | | 643-223-001 |
| 10 | PTFE O-ring | | 1 | 649-338-000 |
| 11 | Pusher Post | 416 SS Elastomer | 1 | 613-041-000 |
| | | 416 SS Metal to Metal | | 613-042-000 |
| | | 316 SS Elastomer | | 613-041-001 |
| | | 316 SS Metal to Metal | | 613-042-001 |
| 12 | Pusher Post Gasket (Metal Dia's Only) | | 2 | 624-099-000 |
| 13 | Range Springs | 5 - 80 PSIG, Light Blue | 1 | 655-768-001 |
| | | 60 - 120 PSIG, Light Gray | | 655-768-002 |
| | | 120 - 150 PSIG, Black | | 655-768-003 |
| | | 100 - 140 PSIG, Yellow | | 655-768-004 |
| 14 | Orifice | 416SS Metal to Metal | 1 | 688-066-000 |
| | | 316SS Metal to Metal | | 688-066-001 |
| | | 416SS Composite | | 688-068-000 |
| | | 316SS Composite | | 688-068-001 |
| | | Brass Composite | | 688-068-002 |
| 15 | Dia-phragm | Diaphragm - 302SS | 2 | 618-108-000 |
| | | Diaphragm - Neoprene | | 618-109-000 |
| 16 | Diaphragm Gasket (Metal Dia's Only) | | 1 | 624-100-000 |
| 17 | Stem Guide Spring | | 1 | 655-770-000 |
| 18 | Lower Spring Seat | | 1 | 626-117-000 |
| 19 | Upper Spring Seat | | 1 | 626-116-000 |
| 20 | Piston | Steel | 2 | 637-337-000 |
| | | 316 Stainless Steel | | 637-337-001 |
| 21 | Adjusting Screw, Steel, | | 1 | 648-569-000 |
| 22 | Stem Lock Nut | | 1 | 634-212-000 |
| 23 | Hex Cap Screw | | 8 | 648-467-009 |
| 24 | Vent Screen | | 1 | 836-004-000 |
| 25 | Hex Nut | | 1 | 634-213-000 |
| 26 | Lock Washer | | 1 | 662-000-018 |
| 27 | Name Plate (not shown) | | 1 | 632-524-000 |
| 28 | Name Plate Drive Screws (not shown) | | 2 | 648-464-000 |



P95H Maximum Body & Bonnet Temp Range

| | | |
|-----------|----------------|----------------|
| Cast Iron | -40° to +406°F | -40° to +208°C |
| Steel | -20° to +450°F | -29° to +232°C |

P95H Maximum Diaphragm & Seat Temp Range

| | | |
|-----------|----------------|----------------|
| Neoprene | -40° to +180°F | -40° to +82°C |
| Stainless | -40° to +650°F | -40° to +343°C |